

**PTC India Financial Services Limited**

**New Delhi**

September 19, 2022

**Field Visit Report:-**

- **Danu Wind Parks Private Limited(DWPPL)- DANU-I**  
Chinnakolumulapalle, Kurnool District, Andhra Pradesh

DWPPL is promoted by Ecoren One Wind Energy Private Limited (EOWEPL), which is promoted by Ecoren Energy India Private Limited (EEIPL) which is in the business of developing wind power projects and has executed projects (as EPC/BoP contractor).

A Term Debt of Rs. 117.00 Cr. was sanctioned to the company for setting up 14 Wind Mills 22.4 MW (14 x1.6 MW) Plant at Chinnakolumulapalle, Kurnool District, Andhra Pradesh in 2016.

The company has a 25 yrs PPA with Andhra Pradesh State Utility at Rs. 4.83/unit.

There is a Stress in the account due to untimely repayment of the debt on account of delay in Receipt of Tariff from AP State Utility. Hence, the account is categorized under EWS Category.

As on date Outstanding Term Debt is Rs. 112.08 Cr.

A field inspection was conducted on 17.09.2022 (Saturday), key observations have been mentioned in the table below:

<b>Date of Visit</b>	17.09.2022
<b>Company Official</b>	Bharat Kumar Raju, Site Manager
<b>Project Details</b>	There are 15 wind mills on the site out of which 14 are asset of Danu Wind Park Private Limited and 1 of NETCO all having PPA with AP Discom. Total Project Capacity is 24.00 MW 22.4 MW( 14*1.6 MW) has been financed by us. Rest 1.6MW pertaining to NETCO has not been financed by PFS.
<b>Plant Availability Factor</b>	98-99% on an Average
<b>Location</b>	Chinnakolumulapalle, Kurnool District of Andhra Pradesh
<b>Status of Wind Mills - operations</b>	14 Wind Mills were working properly. 1 wind mill was under regular half yearly maintenance due to which it was not operational at that time. After the maintenance the operations were resumed at the time of inspection only.



If any fault is detected it is resolved by the team at the same time. Example: In a machine, a line side voltage fault was detected on 14.09.2022 which was resolved in 3 minutes. However, owing to inspection or maintenance, the operations are affected for longer durations. The system in image depicts the speed of Wind mill and Power Generation

## Operation and Maintenance

There are 2 types of Maintenance- Annual and Half-Yearly Annual Maintenance takes 2.5 days in total for one wind mill. And Bi-annual Maintenance takes 1.5 days for each Wind Mill.

EBOP – Transmission Line and Units Operations has been entrusted to Ecoren (Outsourced by Ecoren to Membubnagar Energy Projects P. Ltd.)

WTG Maintenance has been entrusted to Gee (the events like breakdown maintenance)

The company's control Room has 11 members- 6 from Ecoren Team and 5 from Gee Team.

For night Shift 1 employee from each team stays at the site.

## Wind Trends

June to September are High Wind Seasons while other months in the year are low wind seasons.

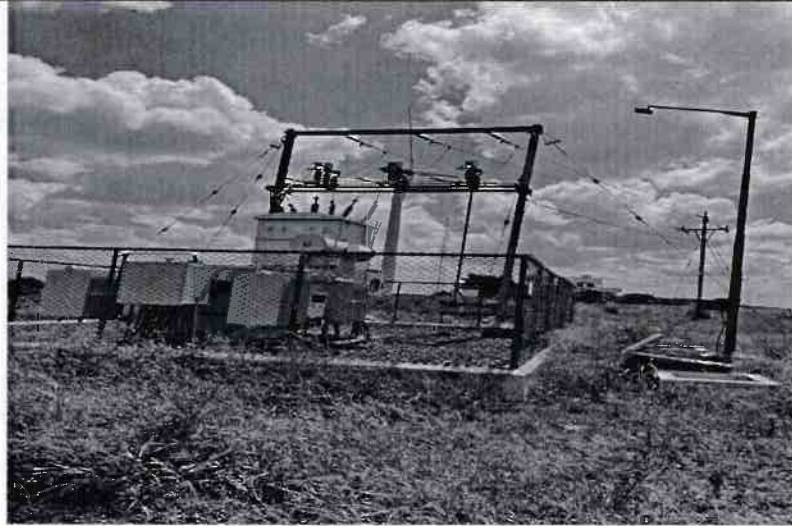
It has been difficult to establish a trend during last 2 years as the wind speed was even slow in High Wind Seasons.

However, in present year, June to September has witnessed high winds.

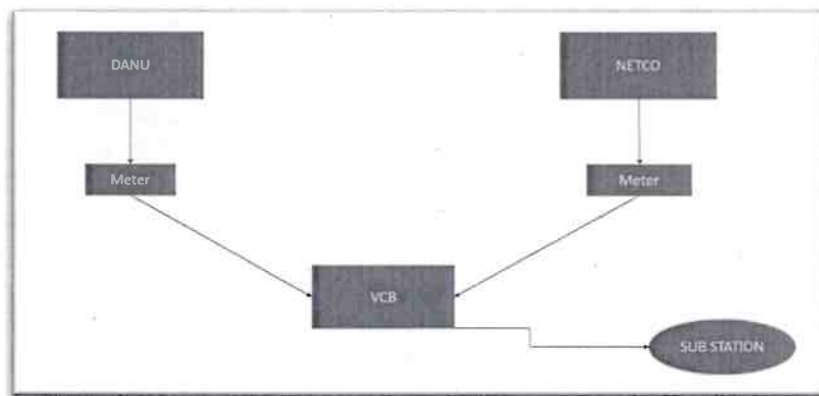
Talking about wind speed, At the time off visit it was around 10.0-11.0 m/s on an average, power generation by one wind mill 924 kW.

## How it works?

Energy is converted from AC to DC for Transmission.  
There is a Load Dispatch center that curtails the load.

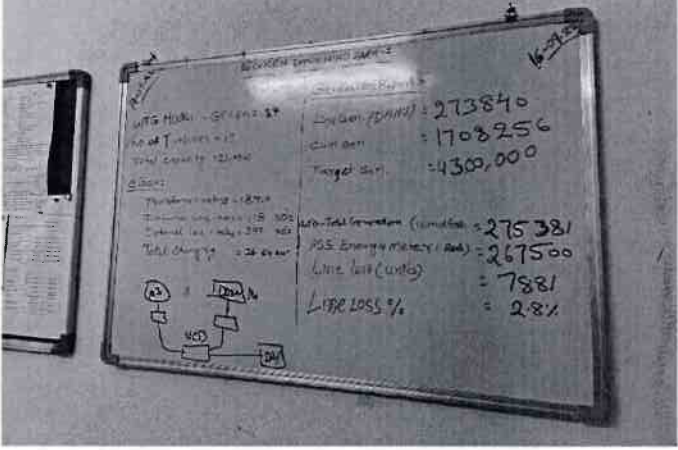


Thereafter the power is transmitted to Unit sub station that can involve some transmission losses on the way.



There are 2 meters installed at Generation Point. One at DANU's end for 14 Wind Mills and 1 at NETCO End for 1 Wind Mill.

There is VCB installed after that point from which a single cable transmits the power to sub-station. There is a meter installed at Sub station and the difference in power generated is owing to normal losses during transmission.

	 <p>It can be observed in image above that on 16.09.2022, 2.8% was line loss.</p> <p>Also, generation by DANU's Windmill and Cumulative generation including NETCO is given.</p>
<p><b>Miscellaneous</b></p>	<ul style="list-style-type: none"> <li>As informed, Appx. For last 3 years there were issues relating to Tariff rate an account of which no Tariff was received during the period.</li> </ul> <p>However the matter has been resolved by the judiciary's judgement and all pending dues will be received within 12 monthly installments and one installment has been received so far.</p> <ul style="list-style-type: none"> <li>In Jan- Feb 2022, Gee who is responsible for WTG maintenance suspended it operations due to which maintenance activity could not be done timely.</li> </ul>

**Enclosed:** Inspection Pictures have been attached in Annexure.

*SahilM*  
SAHIL MAKKAR  
(Manager)

VP(AB)

*Abhinav may see*

*Ms Abhinav - Nodal may also see pl.*

[ED(VSB)]

*Facts of project are OK.*

*AVP (AS)*

*14/10/22*

*14.10.22*

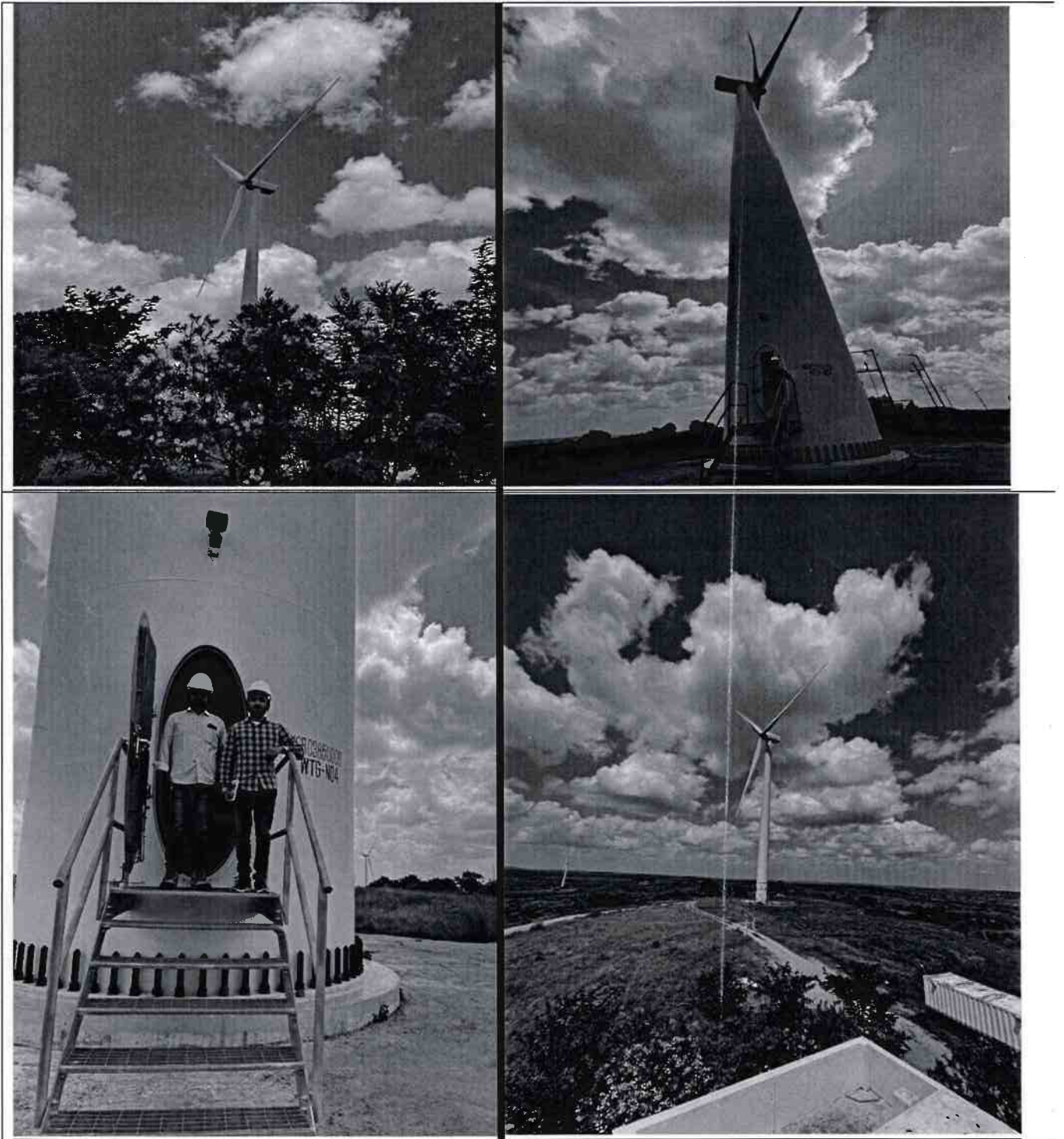
*Ms Abhinav Keep in file*

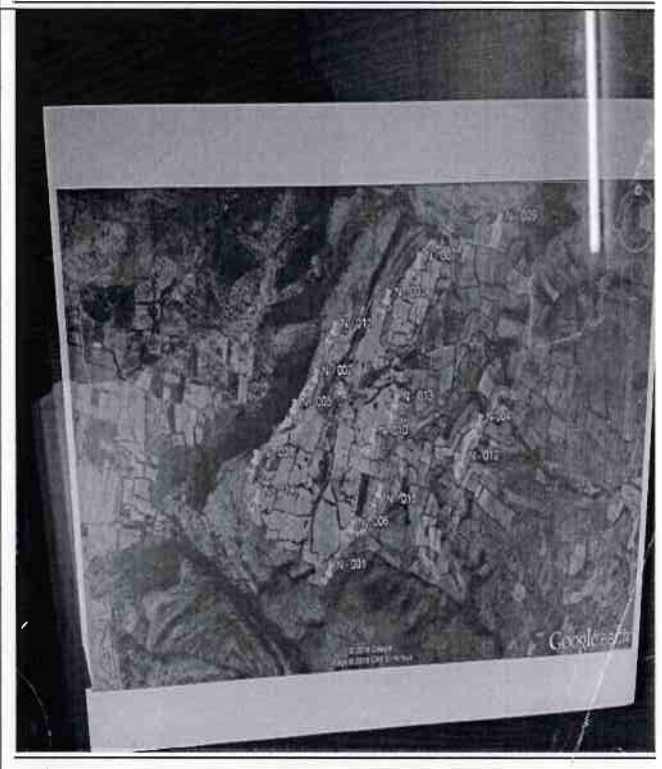
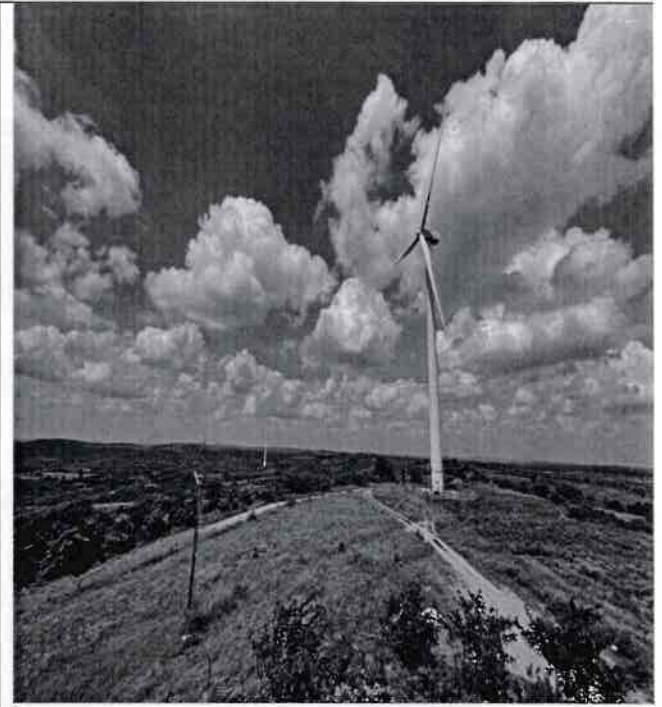
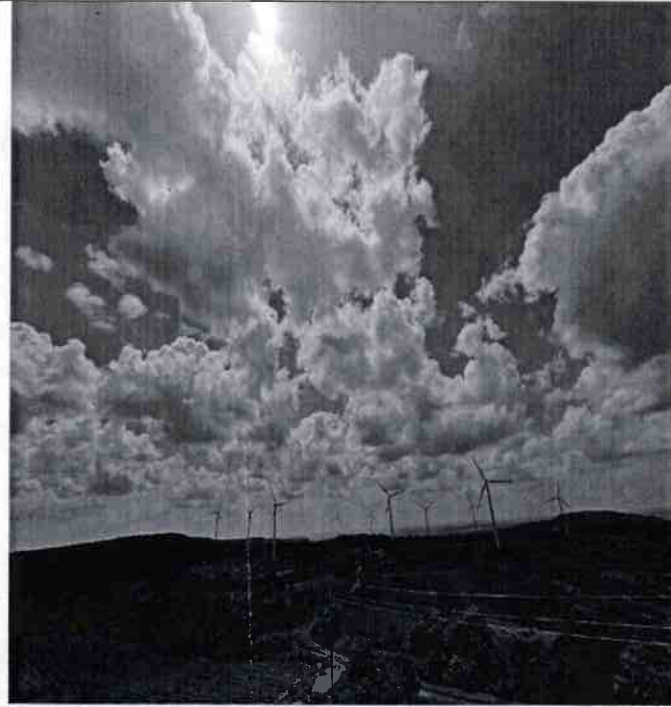
*ED (VSB)*

*17/11/22*

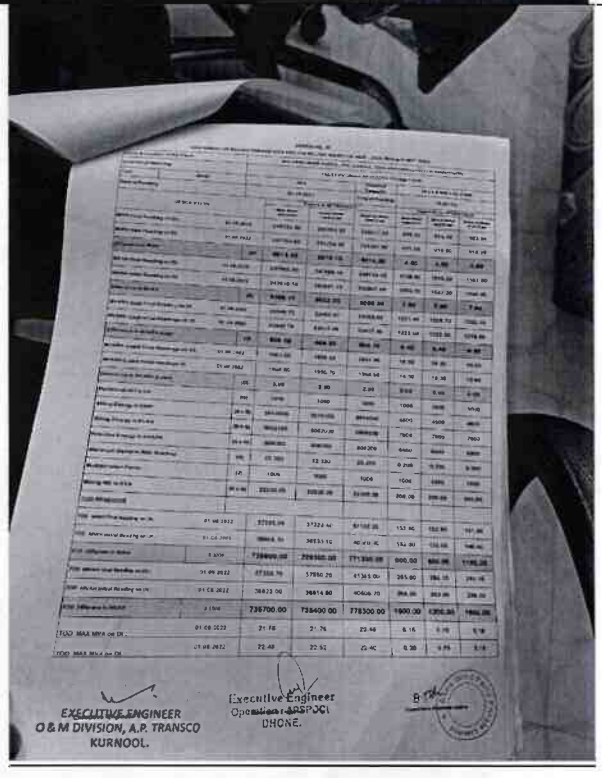


**Annexure:**









ANNEXURE - 1.3  
FORM NO. 100/2017-18  
REVENUE DEPARTMENT, GOVT. OF KARNATAKA  
REVENUE OFFICE, BELLARY DISTRICT, BELLARY

NAME & LOCATION OF THE PLANT: M/S. DAILY WIND PARKS, P.L. Limited, Channarayana (V) in Venkateswara.

LOCATION OF METERING: 132/13 KV Drive No. at 22KV substation, Bellary.

DATE OF READING: 01-06-2022

Sl. No.	Particulars	Reading before M&S (at 00:00 hrs)	Reading after M&S (at 00:00 hrs)	Difference	Reading before M&S (at 00:00 hrs)	Reading after M&S (at 00:00 hrs)	Difference
1	MD (Meters)	22,320	0,200	22,320	0,200	22,320	0,200
2	MD (Cumulative)	1408,120	88,480	1410,780	89,280	1432,960	83,800
3	MD (Total)	73		79		81	
Readings & Net Metered Power of MD							
4	MD (Meters)	0.00	0.00	0.00	0.00	0.00	0.00
5	MD (Cumulative)	1431,440	88,680	1433,080	88,480	1464,840	84,800
6	MD (Total)	80		85		82	
Readings of MD after metered power at the previous date							
7	MD (Cumulative)	1408,120	88,480	1410,780	89,280	1432,960	83,800
8	MD (Total)	79		78		81	
Difference in Cumulative MD							
9	Cumulative MD reading after M&S (in the present date)			88,480		88,480	
10	Cumulative MD reading after M&S (in the previous date)			88,480		88,480	
11	Difference in Cumulative MD			0.200		0.200	
12	Whether the difference in Cumulative MD			Yes		Yes	
13	If YES, the current month MD to be added			0.200		0.200	
14	If NO, the Annamalai is			YES		YES	
15	Whether M&S is correct or not (if YES, the reason is)			YES		YES	

EXECUTIVE ENGINEER  
O & M DIVISION, A.P. TRANSCO  
KURNOOL.

EXECUTIVE ENGINEER  
Operation, APSPJCL  
DHONE.



ANNEXURE - 1.3  
FORM NO. 100/2017-18  
REVENUE DEPARTMENT, GOVT. OF KARNATAKA  
REVENUE OFFICE, BELLARY DISTRICT, BELLARY

NAME & LOCATION OF THE PLANT: M/S. DAILY WIND PARKS, P.L. Limited, Channarayana (V) in Venkateswara.

LOCATION OF METERING: 132/13 KV Drive No. at 22KV substation, Bellary.

DATE OF READING: 01-06-2022

Sl. No.	Particulars	Reading before M&S (at 00:00 hrs)	Reading after M&S (at 00:00 hrs)	Difference
1	MD (Meters)	22,320	0,200	22,320
2	MD (Cumulative)	1408,120	88,480	1410,780
3	MD (Total)	73		79
Readings & Net Metered Power of MD				
4	MD (Meters)	0.00	0.00	0.00
5	MD (Cumulative)	1431,440	88,680	1433,080
6	MD (Total)	80		85
Readings of MD after metered power at the previous date				
7	MD (Cumulative)	1408,120	88,480	1410,780
8	MD (Total)	79		78
Difference in Cumulative MD				
9	Cumulative MD reading after M&S (in the present date)			88,480
10	Cumulative MD reading after M&S (in the previous date)			88,480
11	Difference in Cumulative MD			0.000
12	Whether the difference in Cumulative MD			0.200
13	If YES, the current month MD to be added			0.200
14	If NO, the Annamalai is			YES
15	Whether M&S is correct or not (if YES, the reason is)			YES

EXECUTIVE ENGINEER  
O & M DIVISION, A.P. TRANSCO  
KURNOOL.

EXECUTIVE ENGINEER  
Operation, APSPJCL  
DHONE.



\* N11 machine started at 10:27 started at 11:28  
\* Blade inspection.  
\* N12 machine started at 11:35 started at 12:17  
\* Blade inspection.

Heavy Reading in logbook in 4:00 clock 4:45

Duty - D. Basha.

Sl. No.	Particulars	Reading before M&S (at 00:00 hrs)	Reading after M&S (at 00:00 hrs)	Difference
1	MD (Meters)	22,320	0,200	22,320
2	MD (Cumulative)	1408,120	88,480	1410,780
3	MD (Total)	73		79
Readings & Net Metered Power of MD				
4	MD (Meters)	0.00	0.00	0.00
5	MD (Cumulative)	1431,440	88,680	1433,080
6	MD (Total)	80		85
Readings of MD after metered power at the previous date				
7	MD (Cumulative)	1408,120	88,480	1410,780
8	MD (Total)	79		78
Difference in Cumulative MD				
9	Cumulative MD reading after M&S (in the present date)			88,480
10	Cumulative MD reading after M&S (in the previous date)			88,480
11	Difference in Cumulative MD			0.000
12	Whether the difference in Cumulative MD			0.200
13	If YES, the current month MD to be added			0.200
14	If NO, the Annamalai is			YES
15	Whether M&S is correct or not (if YES, the reason is)			YES



4. P.O. machine started at 10:10  
 5. Open box inspection  
 6. P.O. machine stopped at 11:10  
 7. Line site crew well beyond

1. 1st/2nd/3rd  
 2. 4th/5th/6th  
 3. 7th/8th/9th  
 4. 10th/11th/12th  
 5. 13th/14th/15th  
 6. 16th/17th/18th  
 7. 19th/20th/21st  
 8. 22nd/23rd/24th  
 9. 25th/26th/27th  
 10. 28th/29th/30th  
 11. 31st/32nd/33rd  
 12. 34th/35th/36th  
 13. 37th/38th/39th  
 14. 40th/41st/42nd  
 15. 43rd/44th/45th  
 16. 46th/47th/48th  
 17. 49th/50th/51st  
 18. 52nd/53rd/54th  
 19. 55th/56th/57th  
 20. 58th/59th/60th  
 21. 61st/62nd/63rd  
 22. 64th/65th/66th  
 23. 67th/68th/69th  
 24. 70th/71st/72nd  
 25. 73rd/74th/75th  
 26. 76th/77th/78th  
 27. 79th/80th/81st  
 28. 82nd/83rd/84th  
 29. 85th/86th/87th  
 30. 88th/89th/90th  
 31. 91st/92nd/93rd  
 32. 94th/95th/96th  
 33. 97th/98th/99th  
 34. 100th/101st/102nd  
 35. 103rd/104th/105th  
 36. 106th/107th/108th  
 37. 109th/110th/111st  
 38. 112th/113th/114th  
 39. 115th/116th/117th  
 40. 118th/119th/120th  
 41. 121st/122nd/123rd  
 42. 124th/125th/126th  
 43. 127th/128th/129th  
 44. 130th/131st/132nd  
 45. 133rd/134th/135th  
 46. 136th/137th/138th  
 47. 139th/140th/141st  
 48. 142nd/143rd/144th  
 49. 145th/146th/147th  
 50. 148th/149th/150th  
 51. 151st/152nd/153rd  
 52. 154th/155th/156th  
 53. 157th/158th/159th  
 54. 160th/161st/162nd  
 55. 163rd/164th/165th  
 56. 166th/167th/168th  
 57. 169th/170th/171st  
 58. 172nd/173rd/174th  
 59. 175th/176th/177th  
 60. 178th/179th/180th  
 61. 181st/182nd/183rd  
 62. 184th/185th/186th  
 63. 187th/188th/189th  
 64. 190th/191st/192nd  
 65. 193rd/194th/195th  
 66. 196th/197th/198th  
 67. 199th/200th/201st  
 68. 202nd/203rd/204th  
 69. 205th/206th/207th  
 70. 208th/209th/210th  
 71. 211st/212nd/213rd  
 72. 214th/215th/216th  
 73. 217th/218th/219th  
 74. 220th/221st/222nd  
 75. 223rd/224th/225th  
 76. 226th/227th/228th  
 77. 229th/230th/231st  
 78. 232nd/233rd/234th  
 79. 235th/236th/237th  
 80. 238th/239th/240th  
 81. 241st/242nd/243rd  
 82. 244th/245th/246th  
 83. 247th/248th/249th  
 84. 250th/251st/252nd  
 85. 253rd/254th/255th  
 86. 256th/257th/258th  
 87. 259th/260th/261st  
 88. 262nd/263rd/264th  
 89. 265th/266th/267th  
 90. 268th/269th/270th  
 91. 271st/272nd/273rd  
 92. 274th/275th/276th  
 93. 277th/278th/279th  
 94. 280th/281st/282nd  
 95. 283rd/284th/285th  
 96. 286th/287th/288th  
 97. 289th/290th/291st  
 98. 292nd/293rd/294th  
 99. 295th/296th/297th  
 100. 298th/299th/300th  
 101. 301st/302nd/303rd  
 102. 304th/305th/306th  
 103. 307th/308th/309th  
 104. 310th/311st/312nd  
 105. 313rd/314th/315th  
 106. 316th/317th/318th  
 107. 319th/320th/321st  
 108. 322nd/323rd/324th  
 109. 325th/326th/327th  
 110. 328th/329th/330th  
 111. 331st/332nd/333rd  
 112. 334th/335th/336th  
 113. 337th/338th/339th  
 114. 340th/341st/342nd  
 115. 343rd/344th/345th  
 116. 346th/347th/348th  
 117. 349th/350th/351st  
 118. 352nd/353rd/354th  
 119. 355th/356th/357th  
 120. 358th/359th/360th  
 121. 361st/362nd/363rd  
 122. 364th/365th/366th  
 123. 367th/368th/369th  
 124. 370th/371st/372nd  
 125. 373rd/374th/375th  
 126. 376th/377th/378th  
 127. 379th/380th/381st  
 128. 382nd/383rd/384th  
 129. 385th/386th/387th  
 130. 388th/389th/390th  
 131. 391st/392nd/393rd  
 132. 394th/395th/396th  
 133. 397th/398th/399th  
 134. 400th/401st/402nd  
 135. 403rd/404th/405th  
 136. 406th/407th/408th  
 137. 409th/410th/411st  
 138. 412nd/413rd/414th  
 139. 415th/416th/417th  
 140. 418th/419th/420th  
 141. 421st/422nd/423rd  
 142. 424th/425th/426th  
 143. 427th/428th/429th  
 144. 430th/431st/432nd  
 145. 433rd/434th/435th  
 146. 436th/437th/438th  
 147. 439th/440th/441st  
 148. 442nd/443rd/444th  
 149. 445th/446th/447th  
 150. 448th/449th/450th  
 151. 451st/452nd/453rd  
 152. 454th/455th/456th  
 153. 457th/458th/459th  
 154. 460th/461st/462nd  
 155. 463rd/464th/465th  
 156. 466th/467th/468th  
 157. 469th/470th/471st  
 158. 472nd/473rd/474th  
 159. 475th/476th/477th  
 160. 478th/479th/480th  
 161. 481st/482nd/483rd  
 162. 484th/485th/486th  
 163. 487th/488th/489th  
 164. 490th/491st/492nd  
 165. 493rd/494th/495th  
 166. 496th/497th/498th  
 167. 499th/500th/501st  
 168. 502nd/503rd/504th  
 169. 505th/506th/507th  
 170. 508th/509th/510th  
 171. 511st/512nd/513rd  
 172. 514th/515th/516th  
 173. 517th/518th/519th  
 174. 520th/521st/522nd  
 175. 523rd/524th/525th  
 176. 526th/527th/528th  
 177. 529th/530th/53

Time	Power (W)	Current (A)	Voltage (V)	Power (W)	Current (A)	Voltage (V)
10:00	10.3	0.8	12.8	10.3	0.8	12.8
10:05	7.4	0.6	12.3	7.4	0.6	12.3
10:10	8.1	0.7	11.7	8.1	0.7	11.7
10:15	8.9	0.7	12.6	8.9	0.7	12.6
10:20	9.3	0.8	11.6	9.3	0.8	11.6
10:25	9.4	0.8	11.6	9.4	0.8	11.6
10:30	9.4	0.8	11.6	9.4	0.8	11.6
10:35	9.4	0.8	11.6	9.4	0.8	11.6
10:40	9.4	0.8	11.6	9.4	0.8	11.6
10:45	9.4	0.8	11.6	9.4	0.8	11.6
10:50	9.4	0.8	11.6	9.4	0.8	11.6
10:55	9.4	0.8	11.6	9.4	0.8	11.6
11:00	9.4	0.8	11.6	9.4	0.8	11.6
11:05	9.4	0.8	11.6	9.4	0.8	11.6
11:10	9.4	0.8	11.6	9.4	0.8	11.6
11:15	9.4	0.8	11.6	9.4	0.8	11.6
11:20	9.4	0.8	11.6	9.4	0.8	11.6
11:25	9.4	0.8	11.6	9.4	0.8	11.6
11:30	9.4	0.8	11.6	9.4	0.8	11.6
11:35	9.4	0.8	11.6	9.4	0.8	11.6
11:40	9.4	0.8	11.6	9.4	0.8	11.6
11:45	9.4	0.8	11.6	9.4	0.8	11.6
11:50	9.4	0.8	11.6	9.4	0.8	11.6
11:55	9.4	0.8	11.6	9.4	0.8	11.6
12:00	9.4	0.8	11.6	9.4	0.8	11.6
12:05	9.4	0.8	11.6	9.4	0.8	11.6
12:10	9.4	0.8	11.6	9.4	0.8	11.6
12:15	9.4	0.8	11.6	9.4	0.8	11.6
12:20	9.4	0.8	11.6	9.4	0.8	11.6
12:25	9.4	0.8	11.6	9.4	0.8	11.6
12:30	9.4	0.8	11.6	9.4	0.8	11.6
12:35	9.4	0.8	11.6	9.4	0.8	11.6
12:40	9.4	0.8	11.6	9.4	0.8	11.6
12:45	9.4	0.8	11.6	9.4	0.8	11.6
12:50	9.4	0.8	11.6	9.4	0.8	11.6
12:55	9.4	0.8	11.6	9.4	0.8	11.6
13:00	9.4	0.8	11.6	9.4	0.8	11.6
13:05	9.4	0.8	11.6	9.4	0.8	11.6
13:10	9.4	0.8	11.6	9.4	0.8	11.6
13:15	9.4	0.8	11.6	9.4	0.8	11.6
13:20	9.4	0.8	11.6	9.4	0.8	11.6
13:25	9.4	0.8	11.6	9.4	0.8	11.6
13:30	9.4	0.8	11.6	9.4	0.8	11.6
13:35	9.4	0.8	11.6	9.4	0.8	11.6
13:40	9.4	0.8	11.6	9.4	0.8	11.6
13:45	9.4	0.8	11.6	9.4	0.8	11.6
13:50	9.4	0.8	11.6	9.4	0.8	11.6
13:55	9.4	0.8	11.6	9.4	0.8	11.6
14:00	9.4	0.8	11.6	9.4	0.8	11.6
14:05	9.4	0.8	11.6	9.4	0.8	11.6
14:10	9.4	0.8	11.6	9.4	0.8	11.6
14:15	9.4	0.8	11.6	9.4	0.8	11.6
14:20	9.4	0.8	11.6	9.4	0.8	11.6
14:25	9.4	0.8	11.6	9.4	0.8	11.6
14:30	9.4	0.8	11.6	9.4	0.8	11.6
14:35	9.4	0.8	11.6	9.4	0.8	11.6
14:40	9.4	0.8	11.6	9.4	0.8	11.6
14:45	9.4	0.8	11.6	9.4	0.8	11.6
14:50	9.4	0.8	11.6	9.4	0.8	11.6
14:55	9.4	0.8	11.6	9.4	0.8	11.6
15:00	9.4	0.8	11.6	9.4	0.8	11.6
15:05	9.4	0.8	11.6	9.4	0.8	11.6
15:10	9.4	0.8	11.6	9.4	0.8	11.6
15:15	9.4	0.8	11.6	9.4	0.8	11.6
15:20	9.4	0.8	11.6	9.4	0.8	11.6
15:25	9.4	0.8	11.6	9.4	0.8	11.6
15:30	9.4	0.8	11.6	9.4	0.8	11.6
15:35	9.4	0.8	11.6	9.4	0.8	11.6
15:40	9.4	0.8	11.6	9.4	0.8	11.6
15:45	9.4	0.8	11.6	9.4	0.8	11.6
15:50	9.4	0.8	11.6	9.4	0.8	11.6
15:55	9.4	0.8	11.6	9.4	0.8	11.6
16:00	9.4	0.8	11.6	9.4	0.8	11.6
16:05	9.4	0.8	11.6	9.4	0.8	11.6
16:10	9.4	0.8	11.6	9.4	0.8	11.6
16:15	9.4	0.8	11.6	9.4	0.8	11.6
16:20	9.4	0.8	11.6	9.4	0.8	11.6
16:25	9.4	0.8	11.6	9.4	0.8	11.6
16:30	9.4	0.8	11.6	9.4	0.8	11.6
16:35	9.4	0.8	11.6	9.4	0.8	11.6
16:40	9.4	0.8	11.6	9.4	0.8	11.6
16:45	9.4	0.8	11.6	9.4	0.8	11.6
16:50	9.4	0.8	11.6	9.4	0.8	11.6
16:55	9.4	0.8	11.6	9.4	0.8	11.6
17:00	9.4	0.8	11.6	9.4	0.8	11.6
17:05	9.4	0.8	11.6	9.4	0.8	11.6
17:10	9.4	0.8	11.6	9.4	0.8	11.6
17:15	9.4	0.8	11.6	9.4	0.8	11.6
17:20	9.4	0.8	11.6	9.4	0.8	11.6
17:25	9.4	0.8	11.6	9.4	0.8	11.6
17:30	9.4	0.8	11.6	9.4	0.8	11.6
17:35	9.4	0.8	11.6	9.4	0.8	11.6
17:40	9.4	0.8	11.6	9.4	0.8	11.6
17:45	9.4	0.8	11.6	9.4	0.8	11.6
17:50	9.4	0.8	11.6	9.4	0.8	11.6
17:55	9.4	0.8	11.6	9.4	0.8	11.6
18:00	9.4	0.8	11.6	9.4	0.8	11.6
18:05	9.4	0.8	11.6	9.4	0.8	11.6
18:10	9.4	0.8	11.6	9.4	0.8	11.6
18:15	9.4	0.8	11.6	9.4	0.8	11.6
18:20	9.4	0.8	11.6	9.4	0.8	11.6
18:25	9.4	0.8	11.6	9.4	0.8	11.6
18:30	9.4	0.8	11.6	9.4	0.8	11.6
18:35	9.4	0.8	11.6	9.4	0.8	11.6
18:40	9.4	0.8	11.6	9.4	0.8	11.6
18:45	9.4	0.8	11.6	9.4	0.8	11.6
18:50	9.4	0.8	11.6	9.4	0.8	11.6
18:55	9.4	0.8	11.6	9.4	0.8	11.6
19:00	9.4	0.8	11.6	9.4	0.8	11.6
19:05	9.4	0.8	11.6	9.4	0.8	11.6
19:10	9.4	0.8	11.6	9.4	0.8	11.6
19:15	9.4	0.8	11.6	9.4	0.8	11.6
19:20	9.4	0.8	11.6	9.4	0.8	11.6
19:25	9.4	0.8	11.6	9.4	0.8	11.6
19:30	9.4	0.8	11.6	9.4	0.8	11.6
19:35	9.4	0.8	11.6	9.4	0.8	11.6
19:40	9.4	0.8	11.6	9.4	0.8	11.6
19:45	9.4	0.8	11.6	9.4	0.8	11.6
19:50	9.4	0.8	11.6	9.4	0.8	11.6
19:55	9.4	0.8	11.6	9.4	0.8	11.6
20:00	9.4	0.8	11.6	9.4	0.8	11.6
20:05	9.4	0.8	11.6	9.4	0.8	11.6
20:10	9.4	0.8	11.6	9.4	0.8	11.6
20:15	9.4	0.8	11.6	9.4	0.8	11.6
20:20	9.4	0.8	11.6	9.4	0.8	11.6
20:25	9.4	0.8	11.6	9.4	0.8	11.6
20:30	9.4	0.8	11.6	9.4	0.8	11.6
20:35	9.4	0.8	11.6	9.4	0.8	11.6
20:40	9.4	0.8	11.6	9.4	0.8	11.6
20:45	9.4	0.8	11.6	9.4	0.8	11.6
20:50	9.4	0.8	11.6	9.4	0.8	11.6
20:55	9.4	0.8	11.6	9.4	0.8	11.6
21:00	9.4	0.8	11.6	9.4	0.8	11.6
21:05	9.4	0.8	11.6	9.4	0.8	11.6
21:10	9.4	0.8	11.6	9.4	0.8	11.6
21:15	9.4	0.8	11.6	9.4	0.8	11.6
21:20	9.4	0.8	11.6	9.4	0.8	11.6
21:25	9.4	0.8	11.6	9.4	0.8	11.6
21:30	9.4	0.8	11.6	9.4	0.8	11.6
21:35	9.4	0.8	11.6	9.4	0.8	11.6
21:40	9.4	0.8	11.6	9.4	0.8	11.6
21:45	9.4	0.8	11.6	9.4	0.8	11.6
21:50	9.4	0.8	11.6	9.4	0.8	11.6
21:55	9.4	0.8	11.6	9.4	0.8	11.6
22:00	9.4	0.8	11.6	9.4	0.8	11.6
22:05	9.4	0.8	11.6	9.4	0.8	11.6
22:10	9.4	0.8	11.6	9.4	0.8	11.6
22:15	9.4	0.8	11.6	9.4	0.8	11.6
22:20	9.4	0.8	11.6	9.4	0.8	11.6
22:25	9.4	0.8	11.6	9.4	0.8	11.6
22:30	9.4	0.8	11.6	9.4	0.8	11.6
22:35	9.4	0.8	11.6	9.4	0.8	11.6
22:40	9.4	0.8	11.6	9.4	0.8	11.6
22:45	9.4	0.8	11.6	9.4	0.8	11.6
22:50	9.4	0.8	11.6	9.4	0.8	11.6
22:55	9.4	0.8	11.6	9.4	0.8	11.6
23:00	9.4	0.8	11.6	9.4	0.8	11.6
23:05	9.4	0.8	11.6	9.4	0.8	11.6
23:10	9.4	0.8	11.6	9.4	0.8	11.6
23:15	9.4	0.8	11.6	9.4	0.8	11.6
23:20	9.4	0.8	11.6	9.4	0.8	11.6
23:25	9.4	0.8	11.6	9.4	0.8	11.6
23:30	9.4	0.8	11.6	9.4	0.8	11.6
23:35	9.4	0.8	11.6	9.4	0.8	11.6
23:40	9.4	0.8	11.6	9.4	0.8	11.6
23:45	9.4	0.8	11.6	9.4	0.8	11.6
23:50						

