

Ref. No. : DS/Q/1204/23-24  
Date : 13/07/2023

M/s. JS Enterprises  
Haridwar

Subject : Your Requirement of

Dear Sir,

We have great pleasure in introducing, our selves as **I.S.O. 9001-2015 Certified** Progressive organization in the field of **Air Conditioning & Refrigeration Systems**, i.e. Chilling Plants, Compressed Air systems, Centralized A.C. Systems and Cooling Towers, as well as turnkey project of Air Conditioning / chilled / cooling water & compressed air distribution system etc.

We are a professionally organized engineering Company with team of Technocrats having vast experience of 20 - 25 years in this field. We have long list of more than 7000 Satisfied Customers with us .We are catering the clients all over INDIA & ABROAD, backed up with good After Sales Service. We provide excellent service support with a team of 10 service technocrats for our most reliable products and with wide Dealer Network.

We also undertake complete AIR CONDITIONING CONTRACTS on turnkey basis as per clients requirement. The services offered by us include design supply, installation, testing & Commissioning of whole AC systems. We have already extended our services to various industrial sectors mainly in PHARMA, PRECISION Engg., IT industries, all types of Mechanical industries etc.

Our Company policy is to achieve complete customer satisfaction through excellence in product Quality, delivery and continual improvement in Quality Management System through dynamic Quality objectives. We are quite capable to produce more than 25 Machines per month as per Customer requirements & can also take up Turnkey Air Conditioning Projects of any magnitude / application. We now request you to kindly give us an opportunity to serve you for your present / future projects.

With kind regards,

For DRYCOOL Systems (India) Pvt. Ltd.,  
C - 34, Sector-63, Noida -201307 (U.P.) India

Yash Verma  
(CEO)  
98111 - 27340

Chandan Jha  
National Sales Manager  
9643207899

Branch Offices at : HARIDWAR, RUDARPUR, AHMEDABAD, JAIPUR, BANGALORE, INDORE, PUNE, HYDERABAD

Ref No. : DS/Q/1204/23-24	Client : M/s. JS Enterprises
DATE : 13-07-2023	Enquiry : Telephonic

Cooling Tower Capacity	100 TR
Length of Cooling Tower	1800 mm
Height of Cooling Tower	2850 mm
Width of Cooling Tower	1800 mm
Casing	FRP & Gel coated to prevent algae formation
Fill Type	PVC, Honeycomb.
Basin	FRP
Operational Weight	1200 Kg.
FANS:	
Type	Axial Flow
Diameter	1350mm
Material	Cast Al. Alloy/FRP
MOTOR :	
Make	Kissan/Standard makes
Capacity	5 H.P. / 960 RPM
Type	415 $\pm$ 5% V, 3Ph, Sq Cage, IP55 ,TEFC Shaft
Normal Direct driven	
DUTY CONDITIONS:	
Water Flow Rate	1000 LPM
Water Inlet Temp.	38.6 $^{\circ}$ C
Water Outlet Temp.	32.2 $^{\circ}$ C Wet
Bulb Temp.	28.3 $^{\circ}$ C
PERFORMANCE CONDITIONS:	
Drift Losses	0.02%
Evaporation Losses	0.77%
Make up Water	0.79%

1.	EQUIPMENT WARRANTY AND PERFORMANCE GUARANTEE	<p>The equipment to be supplied by us shall be warranty for a period of 12 months from the date of supply However, for clients more than 100 Km. from our site, We charge to &amp; fro , boarding and lodging expenses of our engineer visit during warranty period, against any manufacturing defect. During this period, if any component fails, we shall repair / replace the same free of cost, provided component has to be sent to our factory. Please note that the bought out items the OEM warranty would be applicable.</p>
2.	ERECTION & COMMISSIONING	<p>P&amp;I diagram will be submitted for piping job, &amp; Foundation however supervision charges for Erection of Pipe Line will be Rs. 5000/- per day + GST</p> <p>Kindly call our Commissioning Engineer once pipe line is completed &amp; Water Leakage Tested</p> <p>For commissioning of the Unit our Service Engineer will visit &amp; start the unit with in 1 man days. How ever extra man day shall be charged @ Rs. 5000/-per day. For clients more than 100 Km. from our site, we charge To &amp; Fro Fare, Boarding and Lodging Expenses of our engineer.</p>
3.	CUSTOMER SUPPORT	<p>This division, at DRYCOOL we are proud to state, form the back of our organization and is not most neglected as with competitors. In case of a problem, which is rare, our engineer will be at site shortest possible time. This division takes care of all system maintenance and service requirements. We either repair or replace the defective parts, which ever takes minimum possible time.</p>
4.	Exclusions	<ul style="list-style-type: none"> <li>* Primary &amp; secondary piping with valves &amp; cooling water piping with valves up to the Machine.</li> <li>* All civil work such as foundation for all the equipment, housing for equipment, cutting away and making good walls, floors, slabs etc.</li> <li>* Power cabling &amp; earthing</li> <li>* Supply of cooling water to the makeup line.</li> <li>* Power and water for erection &amp; commissioning of the plant.</li> </ul>

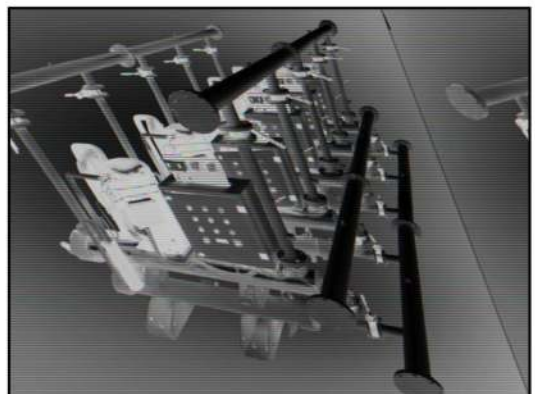
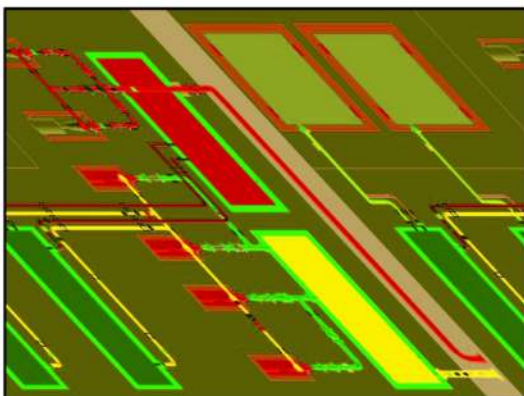
A	PRICES	The prices indicated below are exclusive of any taxes & duties and are ex-works plant Noida.
B.	DRYCOOL Cooling Tower Capacity - 100 TR	: Rs. 2,10,000/-Final Discounted Price
C.	PAYMENT TERMS	40% as advance along with order. 60% against Performa invoice prior to dispatch.
D.	DELIVERY	within 3-4 weeks
E.	TAXES & DUTIES	-Packing charges @ 4% -GST @ 18 % - Freight, forwarding, insurance, octroi (if any)
F.	ACCOUNT DETAILS	BENEFICIARY : DRYCOOL SYSTEMS (INDIA) PVT LTD. GST No. : 09AABCD6383R1ZV BENEFICIARY BANK : KOTAK MAHINDRA BANK SECTOR-63, NOIDA (U.P) ACCOUNT NO. : 01802180000473 IFSC CODE : KKBK0000180
	VALIDITY	This offer will be valid for a period of 30 days from the date of this offer & subject to our written confirmation thereafter  If the delivery of Machine is not taken with in 6 weeks of our written intimation, order will be considered canceled & advance will not be refunded



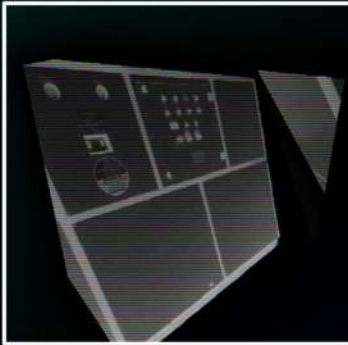
**CLIENTELE AT A GLANCE**


**EXPORTS TO**

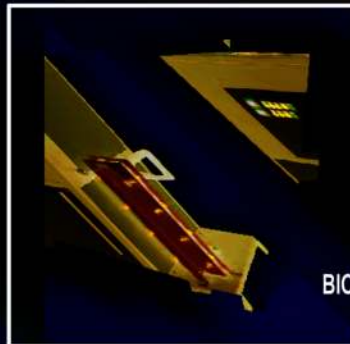
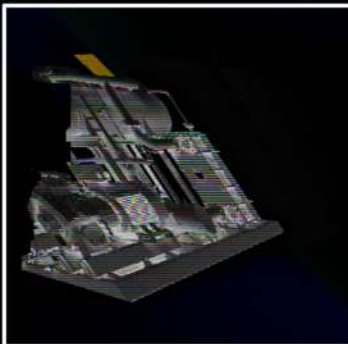
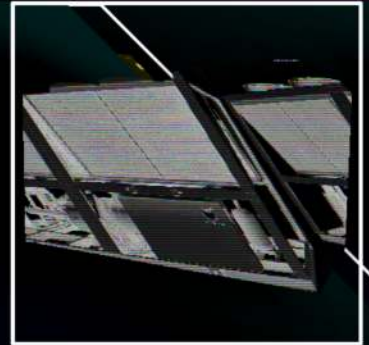
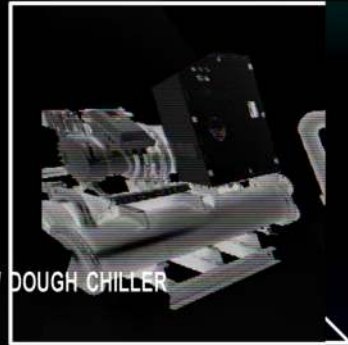

**OUR PROJECT**



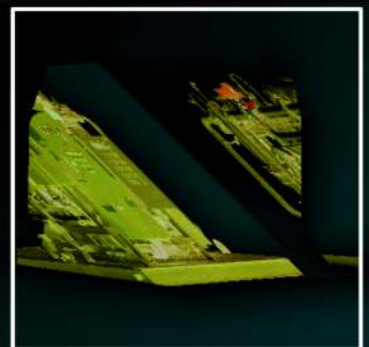
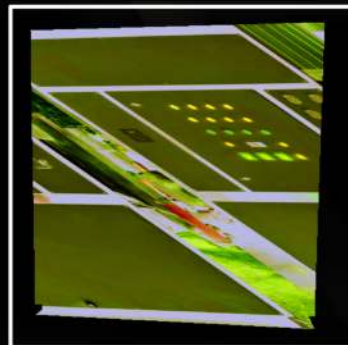
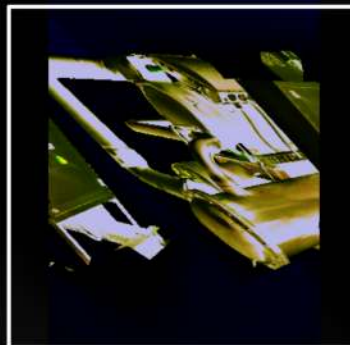
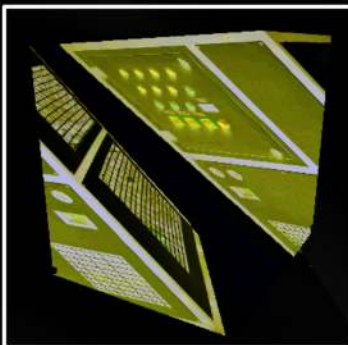
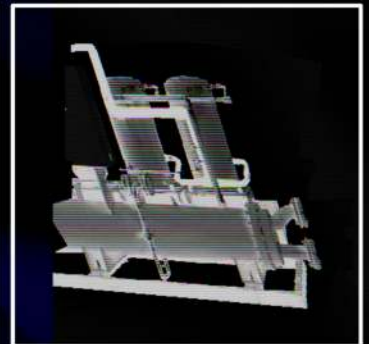
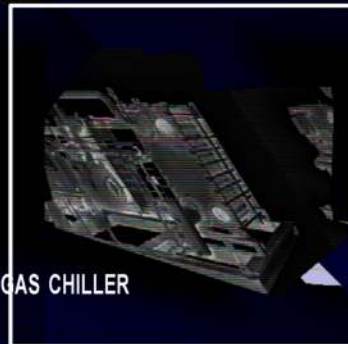
# AMMONIA/DAIRY MILK CHILLER



BAKERY / DOUGH CHILLER



BIO GAS CHILLER





RMC (CEMENT) CHILLER

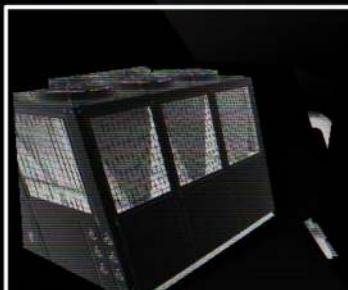
EXTRUSION CHILLER

CHEMICAL

HVAC CHILLER



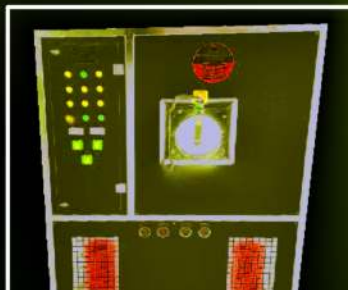
INJECTION CHILLER



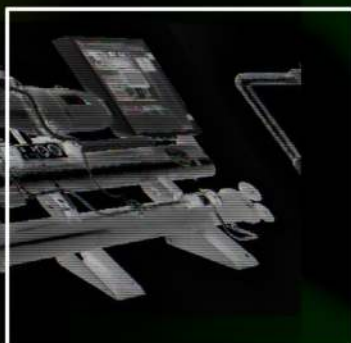
DIE CASTING



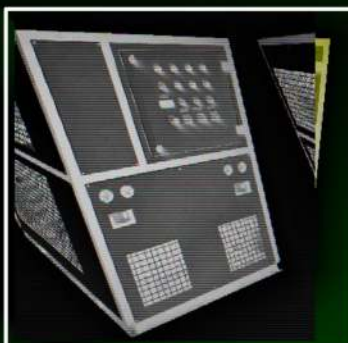
CHILLER RO



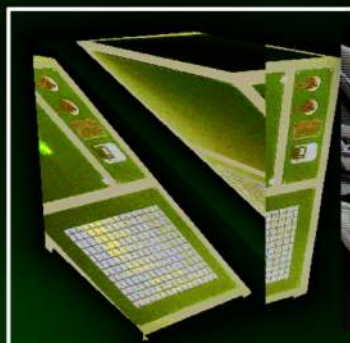
LAMINATING CHILLER



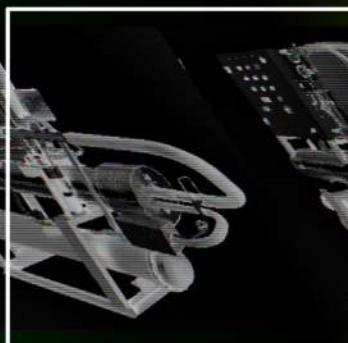
SWIMMING POOL



CHILLER PLASMA



WATER CHILLER



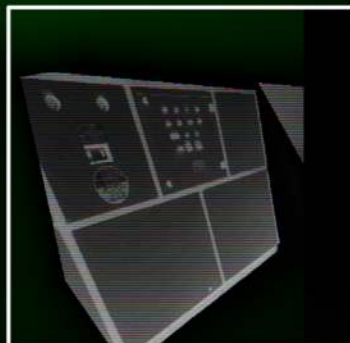
THERMOFORMING



CHILLER



CHILLER



PRINTING CHILLER



CHILLER



CAT SCAN  
CHILLER



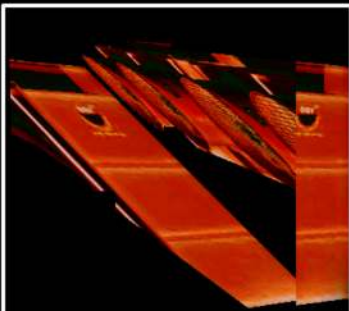
FRP SQUARE TYPE COOLING  
TOWER



BOTTLE TYPE COOLING  
TOWER



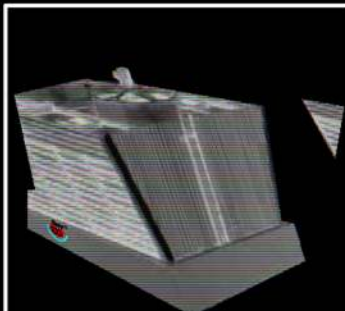
RECTANGULAR TYPE COOLING  
TOWER



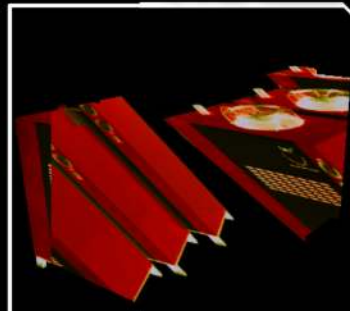
**FORCED DRAFT COOLING  
TOWER**



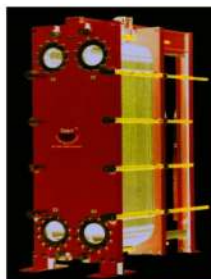
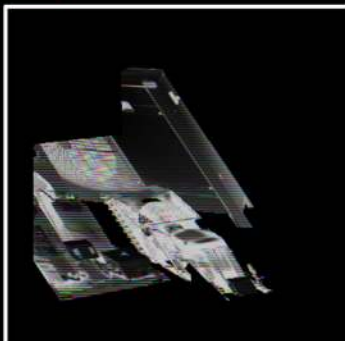
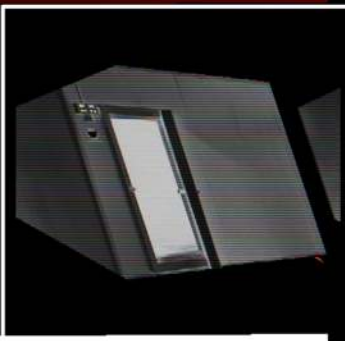
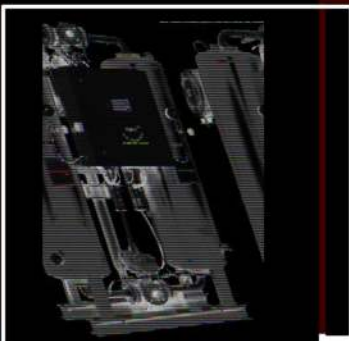
**EVAPORATIVE COOLING  
TOWERS**



**WOODEN TYPE COOLING  
TOWER**



**REFRIGERATED AIR DRYER**



## Service Offerings

Turnkey  
Projects

DRYCOOL  
Intelligence

**Industrial  
Cooling**

**Heating,  
Ventilation &  
Air Conditioning**

**System  
Integration**

**Piping  
Design**

**DLP (Defects  
and Liability  
Period)  
Management**

**Energy  
Management**

**LEED  
Certification**

**DC SAVES  
(Shared  
and Value  
Enhancement  
Savings)**

**DECIP  
(Drycool  
Energy  
Conservation  
Investment  
Partnership)**

**Fault  
Detection  
and  
Diagnostics**