

RAPIDPACK

Proposal

For the supply of

RAPID SERVICES

MAKE

Blister Packing Machine

RP MACH 1+

Rapid Services

Unit-23, Phase-1, Madhuvrinda,
Dhuri Indl. Estate, Waliv Phata,
Vasai (E), Palghar - 401 208

RAPIDPACK

Construction of the Machine

The basic machine comprises of mild steel chassis with SS 304 frames welded and bolted from a rigid frame device structure on which various modular stations are mounted in balcony design.

All the drive component and extensive cabling are located behind and inside the machine

The various stations of the machine are controlled by the centrally mounted spline shaft driven by Main motor. There are two servo motors for operating the Indexing and the feeding system of the machine. The Feeding is done by Product Transfer Roller (PTR) for Alu/Alu Blister accurately.

The entire machine is mounted on the six height adjustable studs so that the entire area below the machine is easily sanitized. The machine will be properly guarded to ensure operator safety.

The cantilevered modular stations adjustments are accessed from the front side of the machine.

The format parts are very easy to mount and dismount and are achieved using minimum tools and tackles.

A complete set of change over can be achieved in less than 30 minutes with minimum operator fatigue.

The basic machine will comprise of the following statistics / functions:

ESSENTIAL

- Base film-loading station.
- Cold forming station for forming the cavity in the base film
- Feeding systems which are product, layout or base foil dependent.
- Web transport station.
- Sealing Station for sealing of the base film to the lidding film.
- Film indexing station.
- Punching station.
- Trim winding assembly.

Rapid Services

Unit-23, Phase-1, Madhuvrinda,
Dhuri Indl. Estate, Wally Phata,
100 200

RAPIDPACK

INDEX

Sr. No.	Description	Pg. No.
01.	Machine Photograph	04
02.	Technical Specification for MACH 1+ Machine.	05
03.	Construction of the Machine	06
04.	Machine & Format Part Functionality	07
05.	Scope of Supply	08-10
06.	Product Speed Chart	11
07.	List of Exclusion	12
08.	Machine GA Drawing	13
09.	Summary of Commercial Terms & Conditions	14

RAPIDPACK

List of Exclusions

Sr. No.	Description
1	All tools and tackles required for commissioning of the machine.
2	All semi skilled and unskilled labour for commissioning of the machine.
3	Utilities like power, compressed air etc for operation of the machine.
4.	All material like tablets/capsules and relevant foils required for commissioning and trials of the machine and change parts.

RAPIDPACK

Machine and Format Part functionality

The forming film or the base film is mounted on the reel feed assembly which is driven by a motor. The loop controller is controlled by a pair of sensors, the motor gets switched off when it is at the bottom level and the motor gets switched on when it reaches the top level which releases the film from the reel.

A pair of cams drives the forming station, when the dye is locked, with the help of mechanical pressure and the forming plug the blister cavity is achieved as per desired dimensions.

During the dwell, time of the machine is indexed so that whatever film is formed within the forming tool is indexed on to a product transport area.

Feeding unit is strategically placed on the film transport area and synchronized with the motion of the machine. The product can be manually loaded or charged with the help of a product lifter into the hopper.

The product-filled web now travels into the sealing station where the base film and the lidding foil fused with the base film with the product. The lidding foil is drawn out of a reel feed assembly which is driven by a motor. The loop controller is controlled by a sensor, which triggers the motor to move on.

The lidding foil would then be fused to the base film at the sealing station.

Embossing batch number is the additional feature in which details onto the narrow end of the blister is done with the help of external metallic letters as per the size suggested by Rapid Pack. These metallic digits are inserted into the top sealing platen and embosses under heat. The batch numbers can be read out from the lidding foil side.

The sealed web is then indexed into the punching tool with the servo assisted indexing roller, which shears the web from the surrounding waste to form packs containing pre determined products.

The surrounding waste is then pulled out from the punching tool through an unwinding device, which is again controlled through a pair of sensors, which is controlled by the tension in the trim.

RAPIDPACK

SCOPE OF SUPPLY

Sr. No.	Description	Unit Price (Rs.)	Value (Rs)
I	Blister Packing Machine Model Mach 1 +	17,50,000.00	17,50,000.00
	<p>Design - Cantilever Type - Modular and Balcony type, which spells ample room for up-gradation as and when required in the same machine in terms of output as well as features.</p> <p>Basic machine in platen design with the following stations :</p> <ul style="list-style-type: none"> - forming material shaft Max reel diameter 440 mm - fill area max 1100 mm length (accessible from the front of the equipment) - sealing station - rotary web index station - punching station - trim shearing station <p>Machine preparation including cold forming station for Alu-Alu 3-phase frequency-controller geared motor</p> <p>Infinitely adjustable for smooth machine start-up and instantaneous stop in case of emergency. Control Voltage 24 volts.</p> <p>Mains 3x400/230 volts.50 cycles with Neutral conductor and separate earth wiring</p>		
	<p>Format range: Max. punching width : 222 mm Max. web indexing : 150 mm</p>		
	Functions		
	- PLC inclusive of temperature modules		
	- data-valid signal parallel to		
	the result signals		
	- menu protection by connection		
	to key-operated admission switch		
	Auto feeding arrangement for Alu/Alu consisting of Vibrator, hopper, Feeding Mechanism		

Rapid Services

Unit-23, Phase-1, Madhuvrinda,
Dhuri Indl. Estate, Waliv Phata,
Vasai (E), Palghar - 401 208.
Maharashtra, India

RAPIDPACK

	Inclusive of Complete set of ALU/ALU change parts for your Product consisting of.....	Inclusive	Inclusive
	a. Alu/Alu Forming Tool b. Feeding Channel c. Set of guide plates d. Upper sealing Platen e. Lower sealing Platen f. Pack Punch assembly g. Forming Indexing Roller		
	Additional set of change parts for Alu/Alu Blisters	2,25,000.00	2,25,000.00
II	a. Alu/Alu Forming Tool b. Feeding Channel c. Set of guide plates d. Upper sealing Platen e. Lower sealing Platen f. Pack Punch assembly g. Forming Indexing Roller		
III	Water Chiller	1,10,000.00	1,10,000.00
IV	Acrylic Guards	1,50,000.00	1,50,000.00
V	PRC Camera System	1,50,000.00	1,50,000.00
VI	Perforation Station	2,00,000.00	2,00,000.00
1	Validation Documents DQ, IOQ and Operating manual.		25,000.00
2	FAT customer to depute their personnel for FAT and make all arrangements for their to and fro travel and all lodging and boarding expense. Customer to provide sufficient foils and product in prescribed quantities for conducting FAT at M/s Rapid Pack site.	Included	
3	SAT M/s Rapid Pack to depute their engineer to customer site for supervision of erection and commissioning activities for 5 days.		35,000.00

RAPIDPACK

TERMS & CONDITIONS:

<u>Delivery Period</u>	:	Within 10 -12 weeks from the date of receipt of your technically and commercially clear order.
<u>Packing Charges</u>	:	Will be extra @ 2%
<u>GST Charges:</u>	:	Will be extra @ 18%.
<u>Freight and forwarding</u>	:	To your account.
<u>Payment Terms</u>	:	50% advance along with order and balance against Performa Invoice.
<u>Our Bank Details</u>	:	Account name :- Rapid Services Bank Name: ICICI Bank Ltd. Account number :- 002205005392 IFSC code :- ICIC0000022 Account type :- Current Account Branch: Vasai West branch
<u>Packaging Material for FAT and SAT</u>	:	You are required to provide free of charge necessary quantities of Tablets/Capsules and packaging material for the purpose of trial runs of the machine at our works.
<u>Installation</u>	:	Free of cost. Boarding & Lodging expenses for our Engineer to be borne by You.
<u>Warrantee</u>	:	The machine with the exception of consumable spares and parts is warranted for one year trouble free performance from the date of commissioning the machine at your defined facilities. If any defect develops within that period, free service will be provided together with free replacement of the required parts. This warrantee is subject to the machine working on one shift basis only and if the machine works more than one shift, then the warrantee deems to become six months.

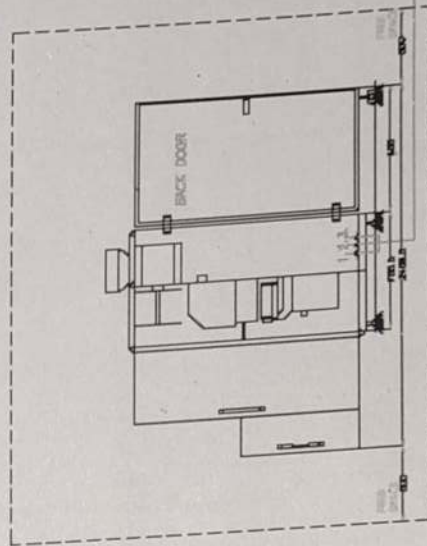
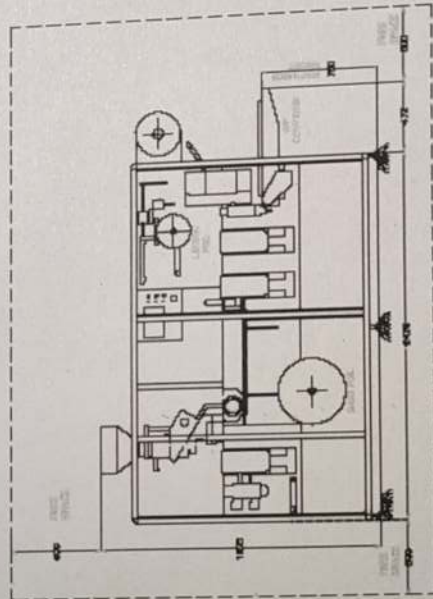
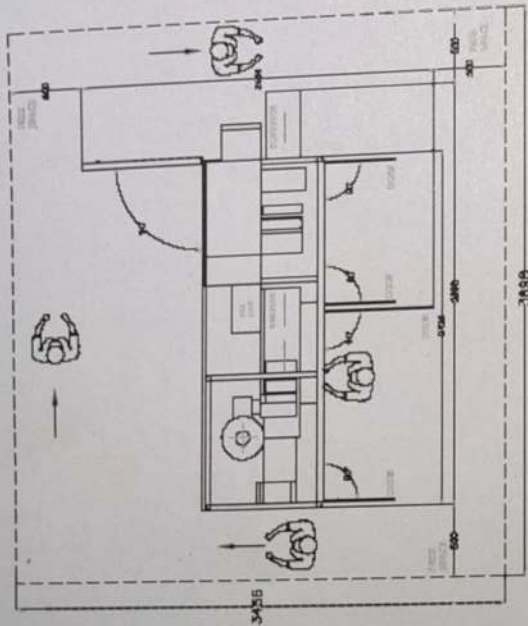
RAPIDPACK

Technical Specifications of MACH 1 +		
Sr. No.	Particulars	RP MACH 1+
1	*Max Machine Speed	25 - 30Cycles / Minute.
2	Max Forming Area	222 X 140 MM
3	Min Pack Size	30x60mm
4	Optimum Forming Depth	18 mm
5	Max Reel Diameter	440 mm
6	Max Lidding Foil	226 mm
7	Max Core Diameter	70-76 mm
UTILITES		
1	Connected Load(Kw)	15 KW
2	Average Power Consumption (Approx.) Supply 3 Phase, 4W+E	5 KW 4 Wire + Protective Earth-in
3	Cooling Water Consumption	120 – 150 Ltr/Hr
4	Compressed Air	16 cfm
5	Net Weight Approx	2200 kgs
FLOOR SPACE		
1	Machine Width	1180+/- 2%
2	Machine Height	1915+/- 2%
3	Machine Length	2900+ / - 2%

***Product and layout specific.**

RAPIDPACK

Machine GA Drawing



UNLESS SPECIFIED:
DIMENSIONS IN MILLIMETERS
TOLERANCES: DIM. 0/0
ANGLES 10/10
RADIUS 10/10
CHAMFER 10/10

FOR CUSTOMER	UNLESS SPECIFIED: DIMENSIONS IN MILLIMETERS TOLERANCES: DIM. 0/0 ANGLES 10/10 RADIUS 10/10 CHAMFER 10/10	RAPID-PACK PVT. LTD. DRAUGHTS CHECKED BY SACIN	INJECTION PACKAGING MACHINE NP MACH 10 10/10/10 10/10/10 10/10/10	SCALE 4/10 10/10/10 10/10/10
--------------	---	---	---	---------------------------------------

MACHINE REQUIREMENTS

APPROX. 6 BAR
WATER FLOW > 120 L/H (AT 27°C)
ELECTRIC SUPPLY > 3 PHASE
TOTAL - 50kW
AVG. - 25kW
415V / 50Hz

Rapid Services

Unit-23, Phase-1, Madhuvrinda,
Dhurwad, Estate, Wadi, Dhule

RAPIDPACK

PRODUCT SPEED CHART FOR MACH 1+

Product Name	Pack Size/Min.	Product Per Pack	Number of Tracks	Strokes/Min.	Machine Output Packs/Min
SIZE 0	136 X 86	10'S	2	25	50
SIZE 1	128 X 80	10'S	2	25	50
SIZE 2	115 X 71	10'S	3	25	75
11 MM	118 X 50	10'S	4	25	100

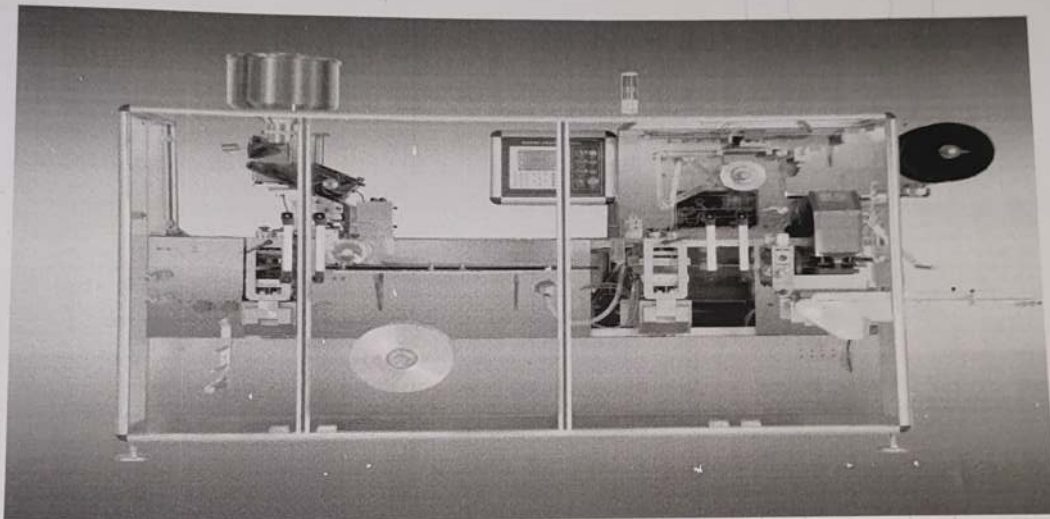
Rapid Services

Unit-23, Phase-1, Madhuvrinda,
Dhuri Indl. Estate, Waliv Phata,
Vasai (E), Palghar - 401 208.
Maharashtra, India.

+91 96071 52123 / 94462 95663 / 90563 53663

RAPIDPACK

Machine Photograph



Rapid Services

Unit-23, Phase-1, Madhuvrinda,
Dhuri Indl. Estate, Waliv Phata,
Vasai (E), Palghar - 401 208.

RAPIDPACK

Dear Sir,

This refers to your requirement for Blister Packing Machine.

Please find enclosed herewith our techno commercial offer for **Blister packing machine RP MACH 1+** for your perusal.

We hope you will find the offer in line with your requirement. In case of any clarification please feel free to contact us.

Thanking you and assuring you of our best attention & services at all the time

For and on behalf of
RAPID SERVICES

Authorised Signatory

Rapid Services

Unit-23, Phase-1, Madhuvrinda,
Dhuri Indl. Estate, Waliv Phata,
Vasai (E), Palghar - 401 208.
Maharashtra, India.