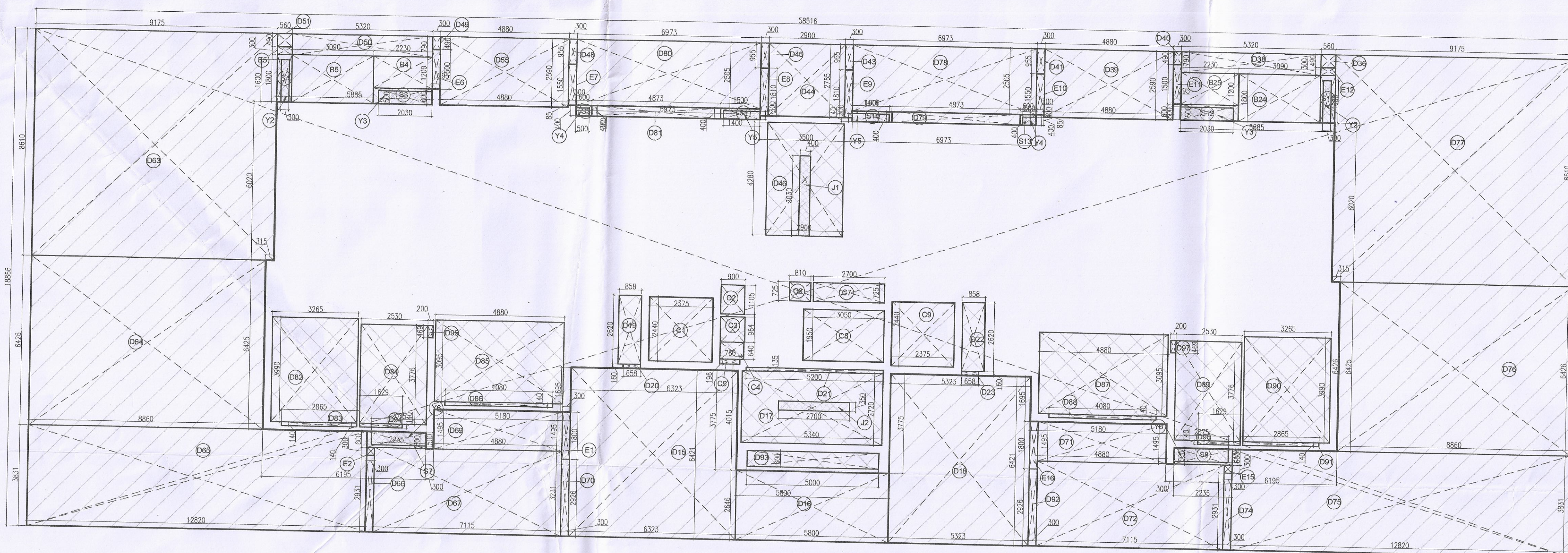
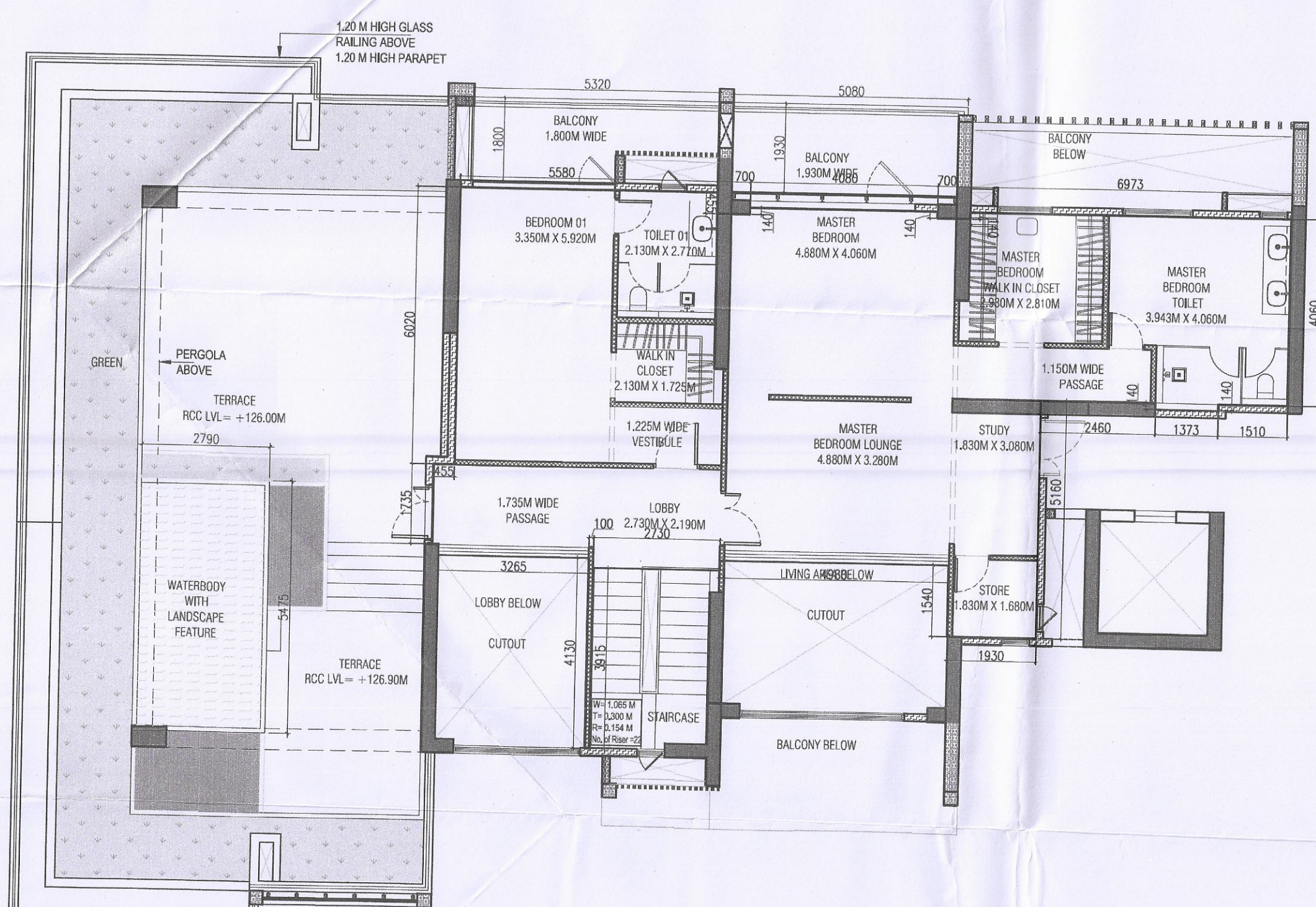


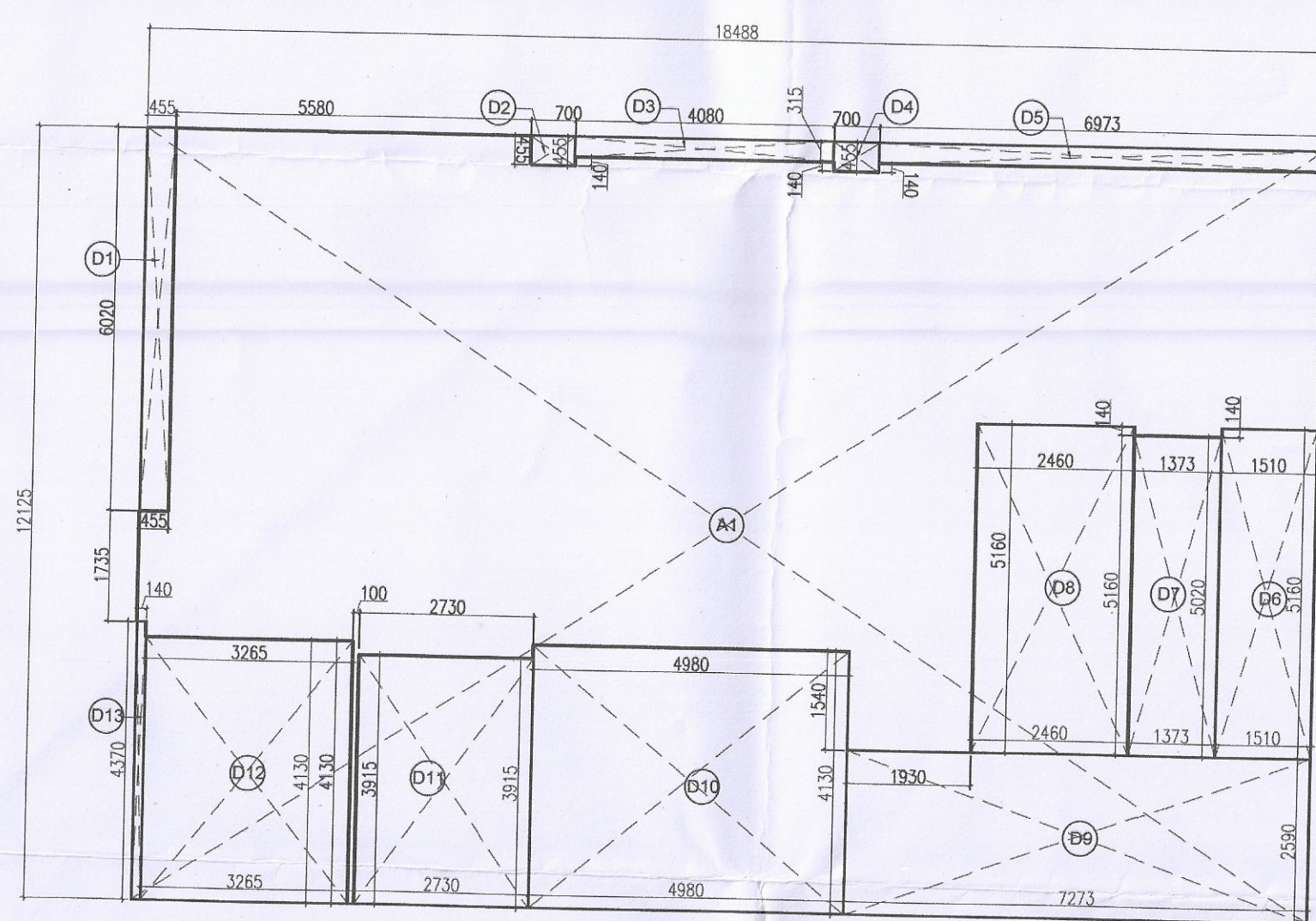
TOWER-C1 : DUPLEX UPPER FLOOR PLAN  
36TH FLOOR



TOWER-C1 : DUPLEX UPPER FLOOR  
AREA DIAGRAM



TOWER-C1 : DUPLEX UPPER LEVEL PLAN



TOWER-C1 : DUPLEX UPPER LEVEL  
AREA DIAGRAM

TOWER-C1					NO'S AT TYPICAL LVL	
INCLUDED UNITS						
UNIT SC = UNIT SCL + UNIT SCU						
UNIT SCU [P4]					2	
AREA STATEMENT OF TOWER-C1						
AT DUPLEX UPPER FLOOR LEVEL (36TH FLOOR) (FAR)						
TITLE	NO.	SHAPE	LENGTH (L) (IN MM)	WIDTH (W) (IN MM)	AREA (L X W) (IN SQM)	
ADDITION						
A1	1	REC	58516	18866	1103.963	
TOWER-C1 ADDITION (ADD1)						
DEDUCTION						
D1	1	REC	2375	2440	5.795	
D2	1	REC	1950	3050	5.945	
D3	1	REC	2375	2440	5.795	
D4	1	REC	6323	6421	40.597	
D5	1	REC	2646	5800	15.344	
D6	1	REC	5323	6421	34.177	
D7	1	REC	490	560	0.274	
D8	1	REC	790	5320	4.203	
D9	1	REC	2590	4880	12.639	
D10	1	REC	300	490	0.147	
D11	1	REC	300	955	0.287	
D12	1	REC	300	955	0.286	
D13	1	REC	2765	2900	8.019	
D14	1	REC	300	955	0.287	
D15	1	REC	300	955	0.286	
D16	1	REC	300	955	0.287	
D17	1	REC	300	490	0.147	
D18	1	REC	790	5320	4.203	
D19	1	REC	490	560	0.274	
D20	1	REC	2590	4880	12.639	
D21	1	REC	8610	9175	78.997	
D22	1	REC	6426	8860	56.930	
D23	1	REC	3831	12820	49.108	
D24	1	REC	300	2931	0.879	
D25	1	REC	3231	7115	22.986	
D26	1	REC	1495	4880	7.296	
D27	1	REC	1495	2926	0.878	
D28	1	REC	1495	4880	7.296	
D29	1	REC	3231	7115	22.986	
D30	1	REC	300	2931	0.879	
D31	1	REC	3831	12820	49.108	
D32	1	REC	6426	8860	56.930	
D33	1	REC	8610	9175	78.997	
D34	1	REC	2505	6973	17.467	
D35	1	REC	400	4873	1.949	
D36	1	REC	2505	6973	17.467	
D37	1	REC	400	4873	1.949	
D38	1	REC	300	2926	0.878	
TOWER-C1 DEDUCTION (DED1)						
TOWER-C1 FAR [ADD1-DED1 = FAR1]						
					772.827	
					331.136	

PLUMBING LEGEND:

- 100 MM Ø SOIL & WASTE PIPE
- 100 MM Ø WASTE & VENT PIPE
- 15 MM Ø ANTI-OX PHOSPHOR PIPE
- 100 MM Ø RAIN WATER PIPE DNTAKE
- DOMESTIC WATER SUPPLY RISER
- FINISHING WATER SUPPLY RISER
- DOMESTIC WATER SUPPLY DNTAKE
- FINISHING WATER SUPPLY DNTAKE

AREA STATEMENT OF UNIT SCU AT DUPLEX UPPER LEVEL (RERA CARPET)						
UNIT SC = UNIT SCL + UNIT SCU						
TITLE	NO.	SHAPE	LENGTH (L) (IN MM)	WIDTH (W) (IN MM)	AREA (L X W) (IN SQM)	
ADDITION						
A1	1	REC	18488	12125	224.167	
UNIT SCU ADDITION (ADD1)						
DEDUCTION						
D1	1	REC	455	6020	2.739	
D2	1	REC	455	700	0.319	
D3	1	REC	315	4080	1.285	
D4	1	REC	455	700	0.318	
D5	1	REC	315	6973	2.196	
D6	1	REC	1510	5160	7.792	
D7	1	REC	1373	5020	6.892	
D8	1	REC	2460	5160	12.694	
D9	1	REC	2590	7273	18.837	
D10	1	REC	4130	4980	20.568	
D11	1	REC	2730	3915	10.688	
D12	1	REC	3265	4130	13.484	
D13	1	REC	140	4370	0.612	
UNIT SCU DEDUCTION (DED1)						
UNIT SCU RERA CARPET [ADD1-DED1 = U1]						
					98.424	
					125.743	

E1	1	REC	300	1800	0.540
E2	1	REC	300	300	0.090
E3	1	REC	300	560	0.168
E4	1	REC	300	1500	0.450
E5	1	REC	300	1550	0.465
E6	1	REC	300	1810.01	0.543
E7	1	REC	300	1810.01	0.543
E8	1	REC	300	1550	0.465
E9	1	REC	300	1550	0.465
E10	1	REC	300	1550	0.465
E11	1	REC	300	1500	0.450
E12	1	REC	300	560	0.168
E13	1	REC	300	300	0.090
E14	1	REC	300	1800	0.540
E15	1	REC	300	1105	0.332
E16	1	REC	300	965	0.289
E17	1	REC	300	925	0.278
E18	1	REC	300	900	0.270
E19	1	REC	300	900	0.270
E20	1	REC	300	900	0.270
E21	1	REC	300	900	0.270
E22	1	REC	300	900	0.270
E23	1	REC	300	900	0.270
E24	1	REC	300	900	0.270
E25	1	REC	300	900	0.270
E26	1	REC	300	900	0.270
E27	1	REC	300	900	0.270
E28	1	REC	300	900	0.270
E29	1	REC	300	900	0.270
E30	1	REC	300	900	0.270
E31	1	REC	300	900	0.270
E32	1	REC	300	900	0.270
E33	1	REC	300	900	0.270
E34	1	REC	300	900	0.270
E35	1	REC	300	900	0.270
E36	1	REC	300	900	0.270
E37	1	REC	300	900	0.270
E38	1	REC	300	900	0.270
E39	1	REC	300	900	0.270
E40	1	REC	300	900	0.270
E41	1	REC	300	900	0.270
E42	1	REC	300	900	0.270
E43	1	REC	300	900	0.270
E44	1	REC	300	900	0.270
E45	1	REC	300	900	0.270
E46	1	REC	300	900	0.270
E47	1	REC	300	900	0.270
E48	1	REC	300	900	0.270
E49	1	REC	300	900	0.270
E50	1	REC	300	900	0.270
E51	1	REC	300	900	0.270
E52	1	REC	300	900	0.270
E53	1	REC	300	900	0.270
E54	1	REC	300	900	0.270
E55	1	REC	300	900	0.270
E56	1	REC	300	900	0.270
E57	1	REC	300	900	0.270
E58	1	REC	300	900	0.270
E59	1	REC	300	900	0.270
E60	1	REC	300	900	0.270
E61	1	REC	300	900	0.270
E62	1	REC	300	900	0.270
E63	1	REC	300	900	0.270
E64	1	REC	300	900	0.270
E65	1	REC	300	900	0.270
E66	1	REC	300	900	0.270
E67	1	REC	300	900	0.270
E68	1	REC	300	900	0.270
E69	1	REC	300	900	0.270
E70	1	REC	300	900	0.270
E71	1	REC	300	900	0.270
E72	1	REC	300	900	0.270
E73	1	REC	300	900	0.270
E74	1	REC	300	900	0.270
E75	1	REC	300	900	0.270
E76	1	REC	300	900	0.270
E77	1	REC	300	900	0.270
E78	1	REC	300	900	0.270
E79	1	REC	300	900	0.270
E80	1	REC	300	900	0.270
E81	1	REC	300	900	0.270
E82	1	REC	300	900	0.270
E83	1	REC	300	900	0.270
E84	1	REC	300	900	0.270
E85	1	REC	300	900	0.270
E86	1	REC	300	900	0.270
E87	1	REC	300	900	0.270
E88	1	REC	300	900	0.270
E89	1	REC	300	900	0.270
E90	1	REC	300	900	0.270
E91	1	REC	300	900	0.270
E92	1	REC	300	900	0.270
E93	1	REC	300	900	0.270
E94	1	REC	300	900	0.270
E95	1	REC	300	900	0.270
E96	1	REC	300	900	0.270
E97	1	REC	300	900	0.270
E98	1	REC	300	900	0.270
E99	1	REC	300	900	0.270
E100	1	REC	300	900	0.270

AREA STATEMENT OF TOWER-C1						
AT DUPLEX UPPER FLOOR LEVEL (36TH FLOOR) (NON FAR)						
TITLE	NO.	SHAPE	LENGTH (L) (IN MM)	WIDTH (W) (IN MM)	AREA (L X W) (IN SQM)	
ADDITION						
S1	1	REC	400	1500	0.60	
S2	1	REC	400	600	0.24	
S3	1	REC	600	2230	1.33	
S4	1	REC	540	1800	1.00	
S5	1	REC	600	2230	1.33	
S8	1	REC	600	2235	1.34	
S11	1	REC	1800	560	1.00	
S12	1	REC	600	2230	1.33	
S13	1	REC	400	300	0.12	
S14	1	REC	400	1300	0.52	
B4	1	REC	1200	2230	2.67	
B5	1	REC	1800	300	0.55	
B6	1	REC	1800	300	0.55	
B25	1	REC	2230	2230	4.97	
D17	1	REC	2720	5340	14.525	
D19	1	REC	858	2620	2.248	
D20	1	REC	160	658	0.105	
D21	1	REC	131	658	0.07	
D22	1	REC	858	2620	2.248	
D23	1	REC	160	658	0.105	
D46	1	REC	2900	4280	12.412	
D82	1	REC	3265	3990	13.037	
D83	1	REC	240	2865	0.681	
D84	1	REC	2530	3776	9.553	
D85	1	REC	3005	4880	15.014	
D86	1	REC	140	4880	0.571	
D87	1	REC	140	2865	0.399	
D88	1	REC	140	4880	0.571	
D89	1	REC	3776	2530	9.553	
D90	1	REC	3265	3990	13.037	
D91	1	REC	140	2865	0.399	
D92	1	REC	140	140	0.02	
D95	1	REC	469	200	0.094	
D96	1	REC	140	1629	0.228	
D97	1	REC	469	200	0.094	
TOWER-C1 DEDUCTION (ADD)						135.882
DEDUCTION						
Y3	2	REC	1600	300	0.960	
Y2	2	REC	500	2030	0.800	
Y4	2	REC	500	300	0.300	
Y5	2	REC	1800	300	0.840	
Y6	2	REC	2075	500	0.775	
J1	2	REC	400	3030	1.212	
J2	2	REC	300	2700	0.900	
TOWER-C1 DEDUCTION (DED)						127.400
TOTAL FAR AT TOWER-C1						137.480
AT DUPLEX LOWER FLOOR LEVEL (NON FAR) (NON FAR)						458.606
TOTAL BUILD UP AREA AT TOWER-C1						
AT DUPLEX LOWER FLOOR LEVEL (FAR + NON FAR) =						
BUA4						