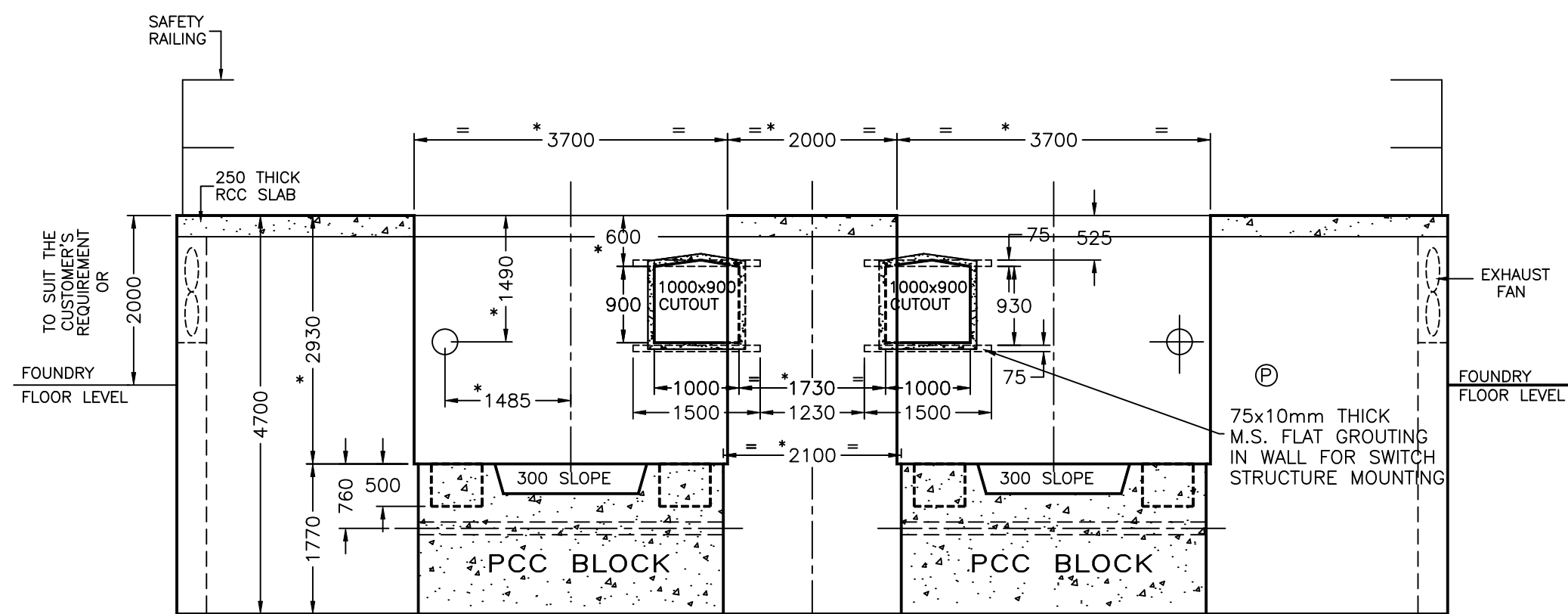
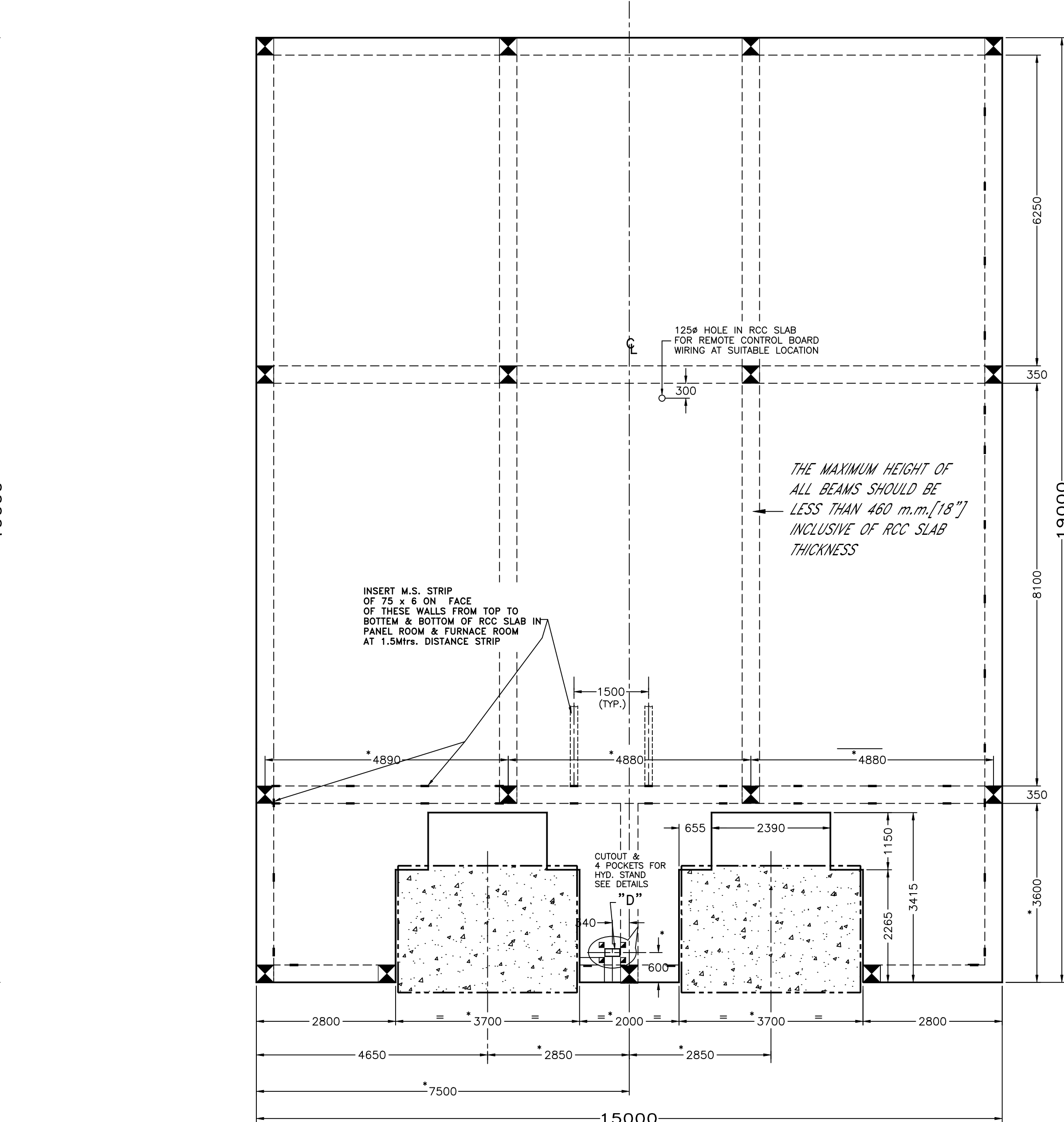


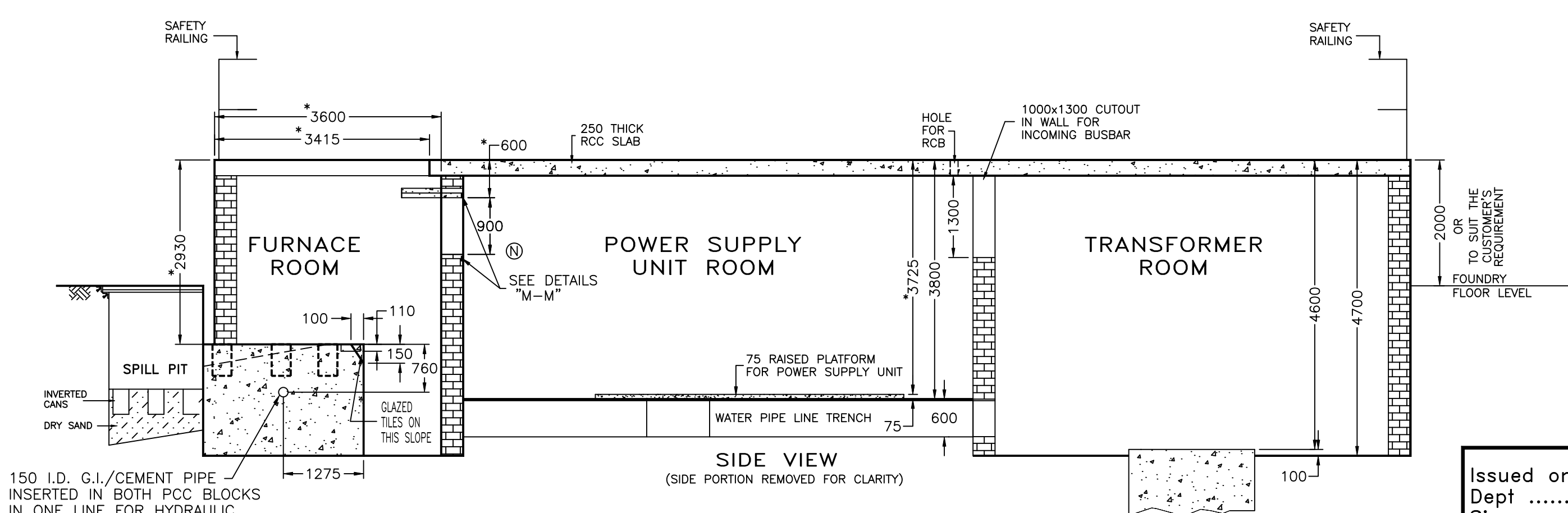
TOP VIEW
(TOP RCC SLAB REMOVED FOR CLARITY)



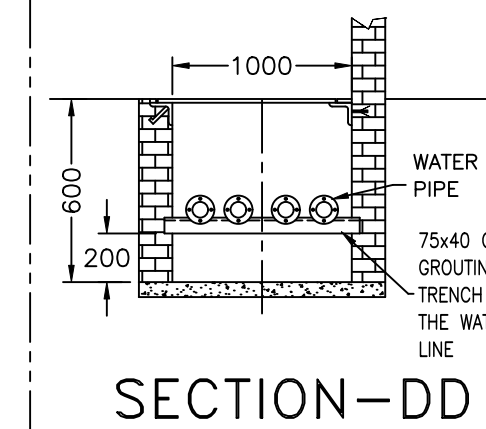
FRONT VIEW



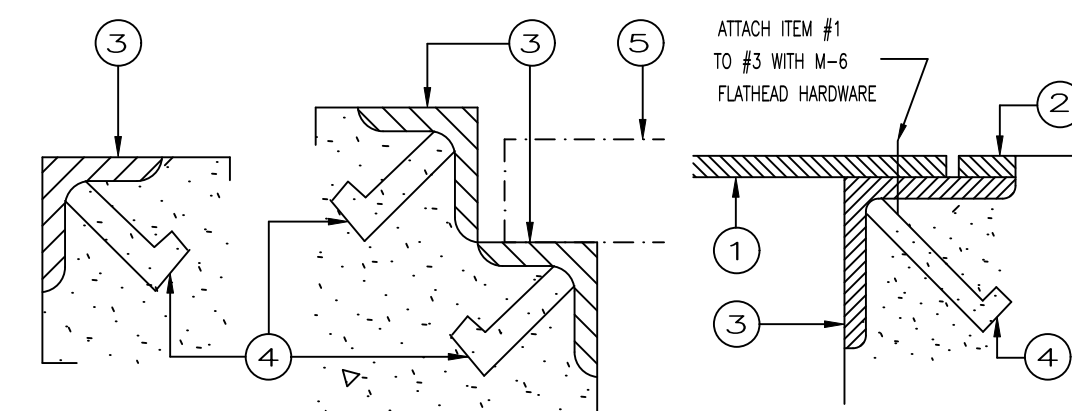
TOP VIEW FOR RCC SLAB
(WITH PROPOSED CLOMUN & BEAM POSITION)



SIDE VIEW
(SIDE PORTION REMOVED FOR CLARITY)

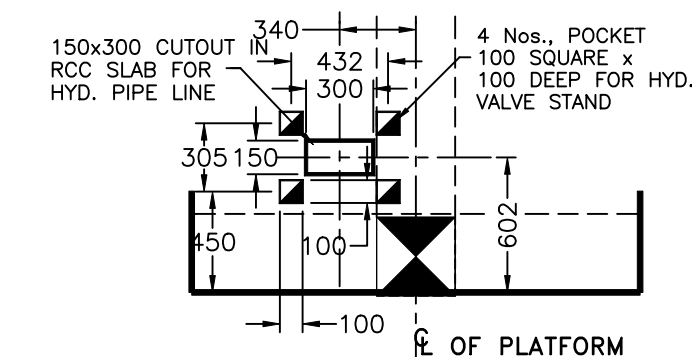


SECTION-DD

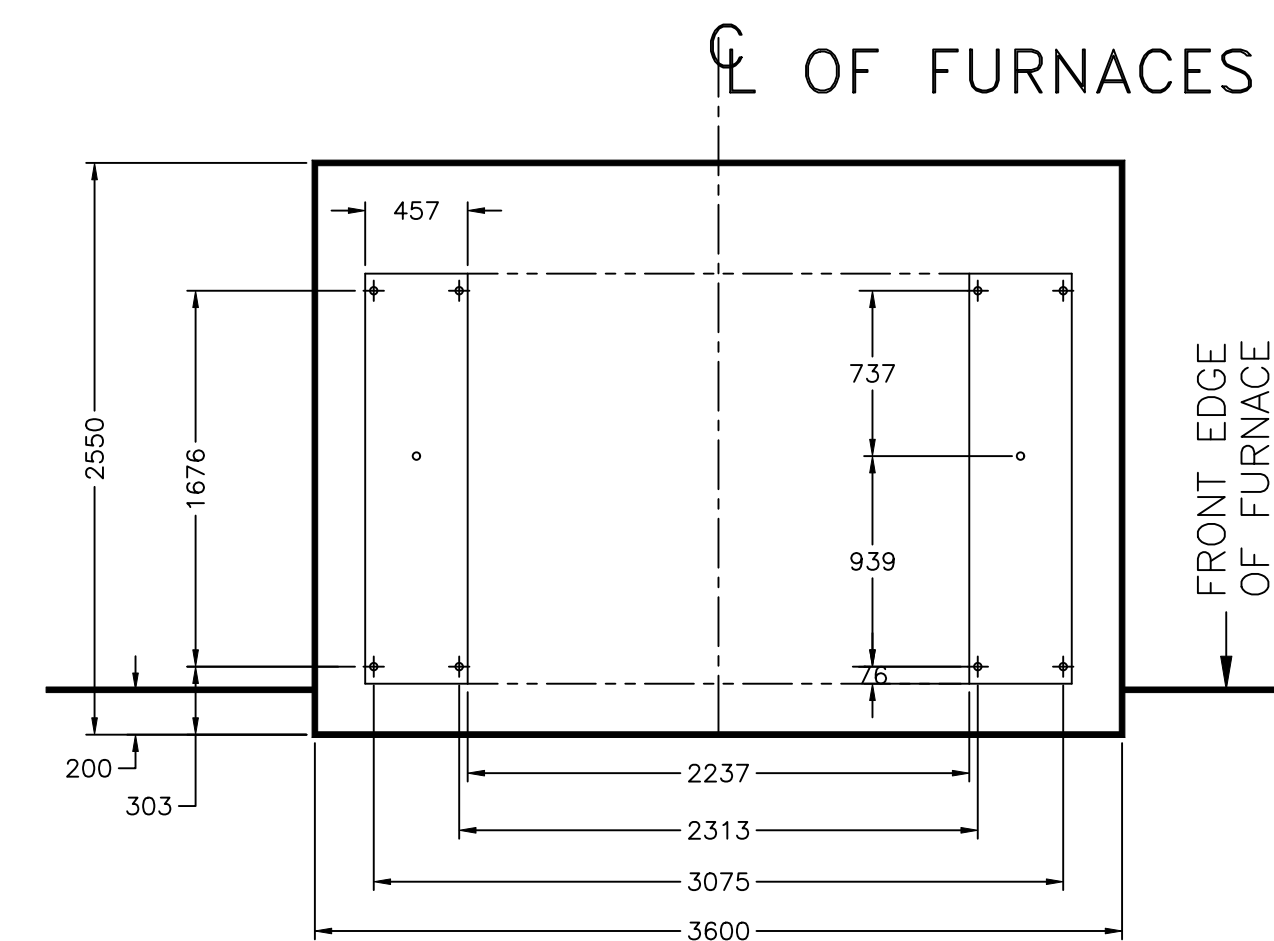


SECTION - AA SECTION - BB SECTION - CC
LIST OF MATERIAL:

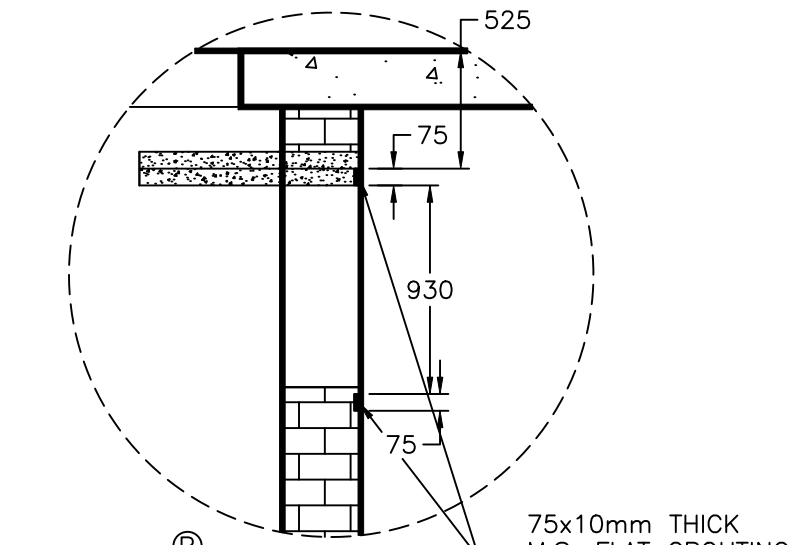
- [01] 10mm THICK SAFETY COVER PLATE.
 - [02] 10 THICK x 20 BUFFER STRIP [WELD TO ANGLE].
 - [03] 6 x 50 x 50 STEEL ANGLE.
 - [04] 10 DIA. STEEL DEFORMED ROD ANCHORS WELD TO ANGLE & CAST IN AROUND SPILL PITS AT 300 PITCH.
 - [05] COMMERCIAL GRATING.
- (ALL ITEMS "BY CUSTOMER")



DETAILS "D"



MOUNTING DETAILS



DETAILS "M-M"

Code	Zone	AS MARK	Code	Zone	AS MARK
P	AS	MARK	P	AS	MARK
Code	Zone	AS MARK	Code	Zone	AS MARK
Code	Zone	AS MARK	Code	Zone	AS MARK

Code	Zone	AS MARK	Code	Zone	AS MARK
P	AS	MARK	P	AS	MARK
Code	Zone	AS MARK	Code	Zone	AS MARK
Code	Zone	AS MARK	Code	Zone	AS MARK

Code	Zone	AS MARK	Code	Zone	AS MARK
P	AS	MARK	P	AS	MARK
Code	Zone	AS MARK	Code	Zone	AS MARK
Code	Zone	AS MARK	Code	Zone	AS MARK

WARNING :

SUITABLE ARRANGEMENTS MUST BE MADE TO DRAIN THE SPILL PIT AREA AND MAINTAIN IT IN A DRY CONDITION. MOISTURE OR WATER ACCUMULATION IN THE RUNOUT APRRON OR SPILL PIT AREA CAN CAUSE A VIOLENT EXPLOSION IF MOLTEN METAL ENTERS THESE AREAS. SERIOUS INJURY TO PERSONNEL AND SEVERE DAMAGE TO EQUIPMENT CAN RESULT FROM FAILURE TO OBSERVE THESE PRECAUTIONS.

Issued on
Dept
Sign

THIS DRAWING CONTAINS PROPRIETARY AND CONFIDENTIAL INFORMATION BELONGING TO INDUCTOTHERM CORP. THIS DRAWING MAY NOT BE REPRODUCED OR COPIED IN WHOLE OR IN PART NOR CAN THE INFORMATION CONTAINED BE USED FOR ANY PURPOSE WITHOUT THE EXPRESS WRITTEN PERMISSION OF INDUCTOTHERM CORP. THIS DRAWING IS THE PROPERTY OF INDUCTOTHERM CORP. AND MUST BE RETURNED UPON REQUEST.

THIS DRAWING IS LOANED BY INDUCTOTHERM CORP. TO THE CUSTOMER OR USER AS A GENERAL DESCRIPTION OF THE EQUIPMENT AND IS TO BE USED FOR THE PROPER INSTALLATION AND OPERATION OF THIS EQUIPMENT. THIS DRAWING MAY NOT BE COPIED, IN WHOLE OR IN PART NOR CAN IT BE USED FOR THE MANUFACTURE OF ANY EQUIPMENT WITHOUT THE EXPRESS WRITTEN PERMISSION OF INDUCTOTHERM CORP.

Code	Zone	AS MARK	Code	Zone	AS MARK
P	AS	MARK	P	AS	MARK
Code	Zone	AS MARK	Code	Zone	AS MARK
Code	Zone	AS MARK	Code	Zone	AS MARK