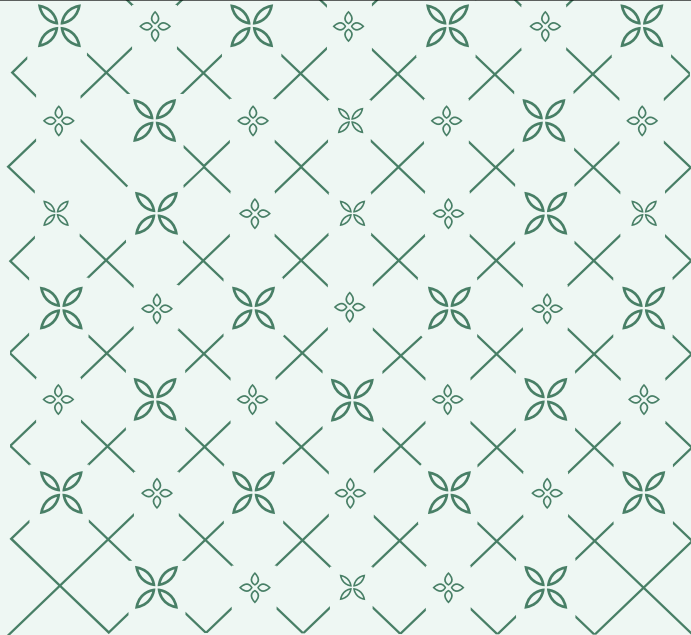


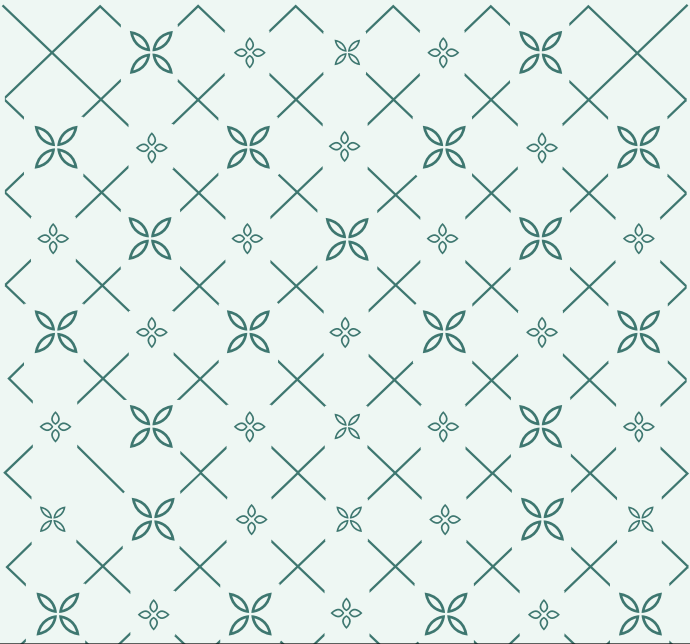


THE NEW BENCHMARK OF LUXURY LIVING



THE MODERN CLASSIC

Step into the charm of a leisurely life where the classic and the contemporary fuse together. A world where the serenity of a blissful life draws you into its beauty. With every boulevard taking you to the timeless allure of its majestic villas and grand residential plots, you always feel surrounded by an aura of elegance.



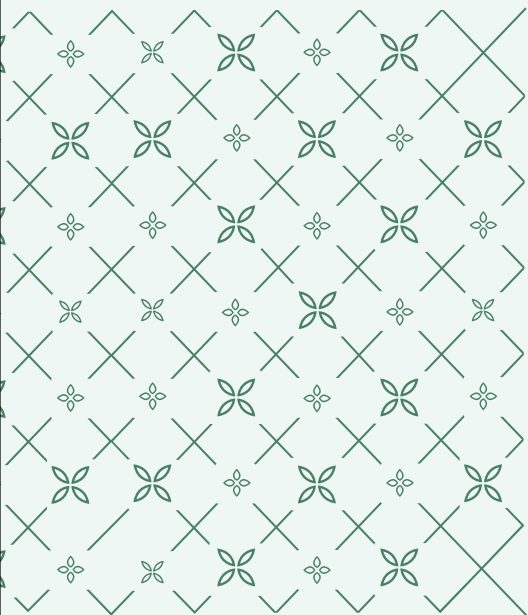
WELCOME TO



ELDECO

AMOR

SECTOR 33, SONIPAT



On the cross roads of Sonipat- Delhi border lies a serene township, tucked away from the hustle and bustle of city, yet connected with the national capital. We welcome you to **Eldeco Amor**, where you can mark your unique signature on life with palatial villas and plots amidst the lush green landscapes. We invite you to discover a life crafted for the modern connoisseur - one where the finest traditions of architecture are reimagined for the discerning few.

ACCESS THE EXTRAORDINARY WITH EASE

PANIPAT

55 KM

KHARKHODA

35 KM

AMBALA

170 KM

KARNAL

85 KM



ELDECO

AMOR

SECTOR 33, SONIPAT





NOIDA

70 KM

PASCHIM VIHAR

40 KM

ROHINI

30 KM

SHALIMAR BAGH

30 KM

PITAMPURA

35 KM

DELHI BORDER

15 KM

ASHOK VIHAR

35 KM

MODEL TOWN

30 KM

GURUGRAM

70 KM

PUNJABI BAGH

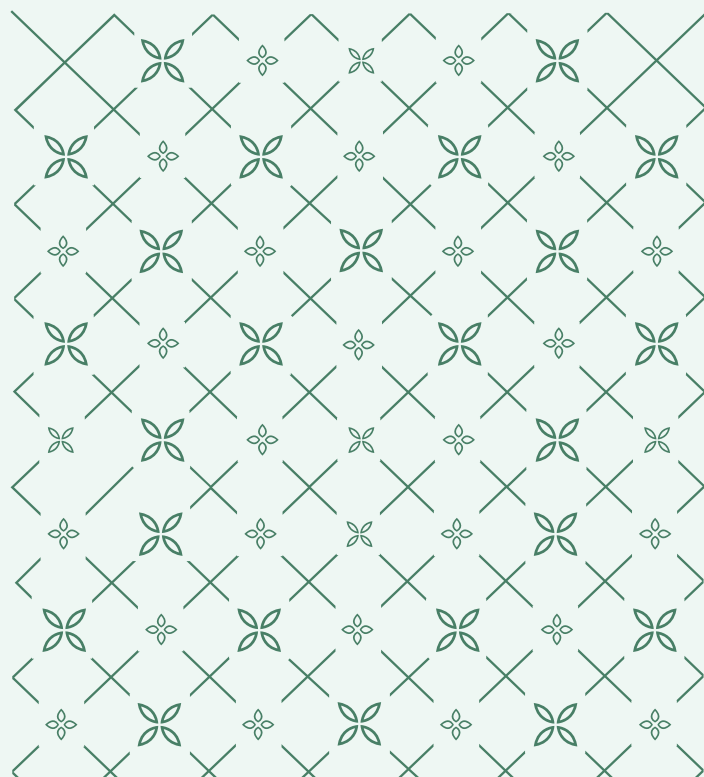
40 KM





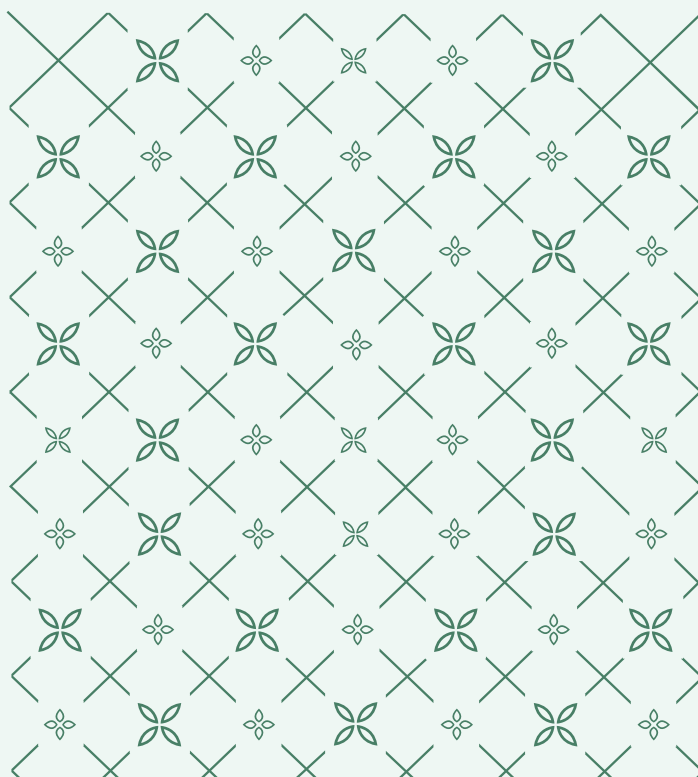
A PALATIAL COMMUNITY AT DELHI'S DOORSTEP

ARTISTIC RENDER



MAJESTIC HOMES FOR THE CONNOISSEURS

Crafted with the vision and flair of an artist, **Eldeco Amor** is more than just an address. A canvas for the expression of your unique story, here every detail whispers of a beauty beyond its alluring aesthetics.



ARTISTIC RENDER



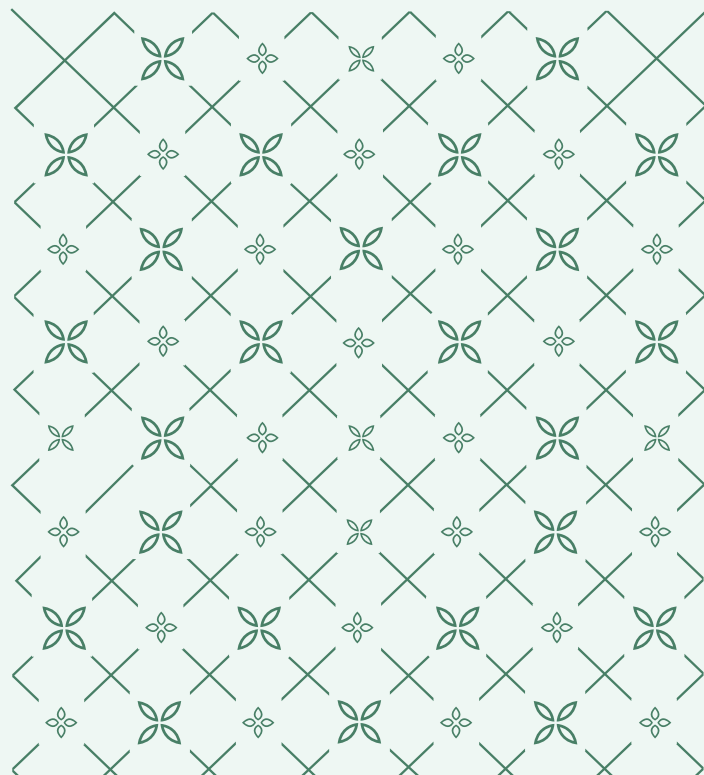






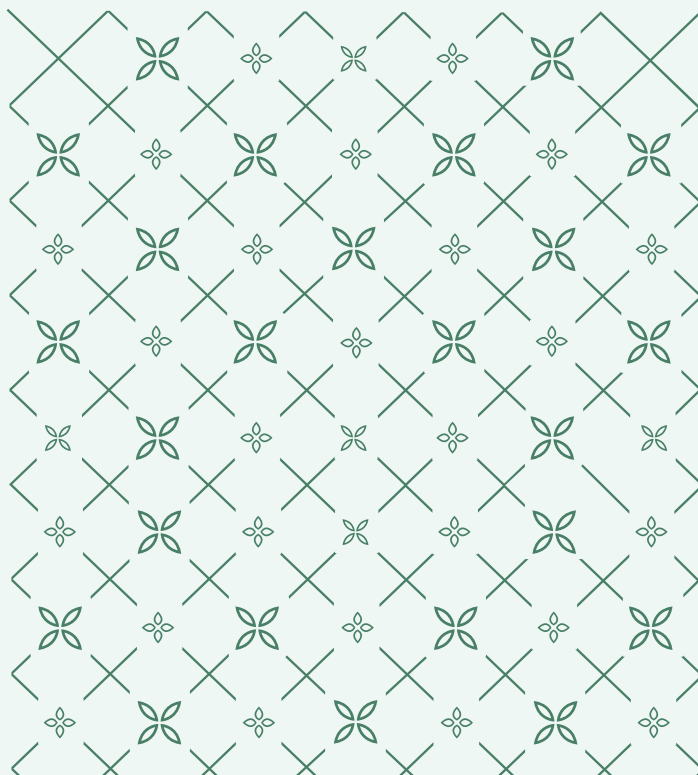
ARTISTIC RENDER

MODERN RETAIL CONVENIENCE FOR AN INDULGING LIFE



Fall in love with irresistible lifestyle

Step into the captivating world of our community living, where the irresistible charm of vibrant lifestyle intertwines to create a tapestry of shared moments. Embrace the warmth, joy, and richness that accompanies falling in love with the extraordinary experiences we collectively cultivate



ARTISTIC RENDER

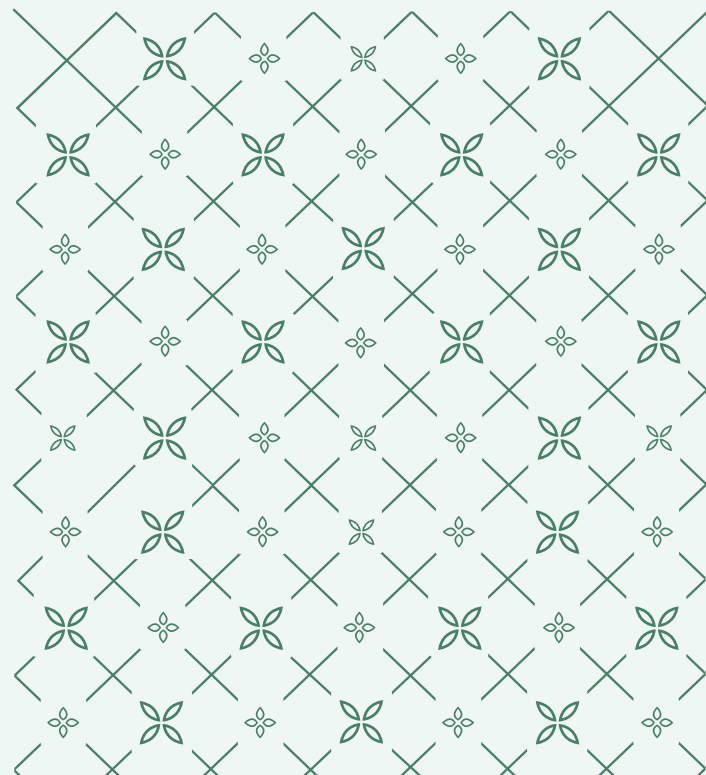






ARTISTIC RENDER

ECHOES OF SERENITY, A LIFE SURROUNDED BY BLISS



Where hearts beat in harmony with nature

Eldeco Amor is more than just a dwelling. Surrounded by nature's green scapes and lush gardens, its timeless charm is the perfect backdrop for a healthy and active lifestyle.

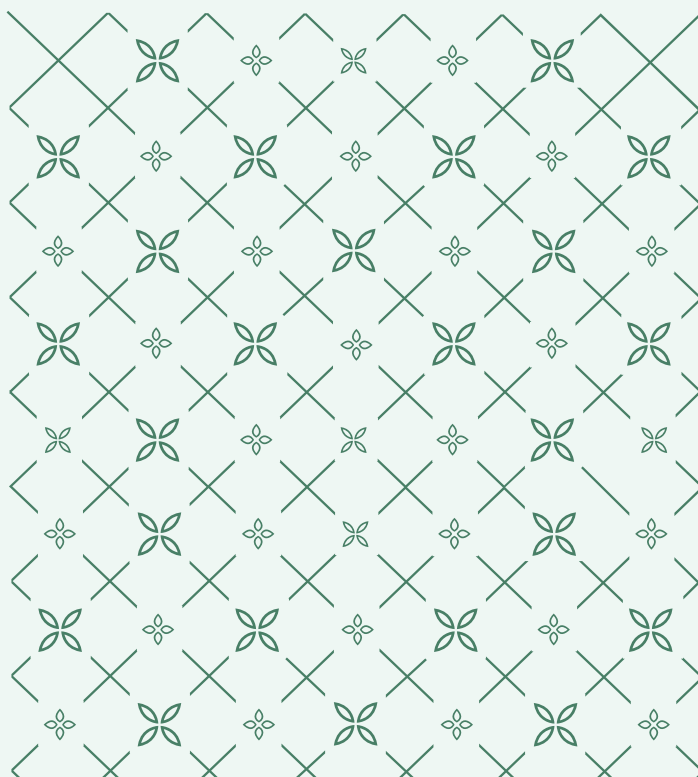


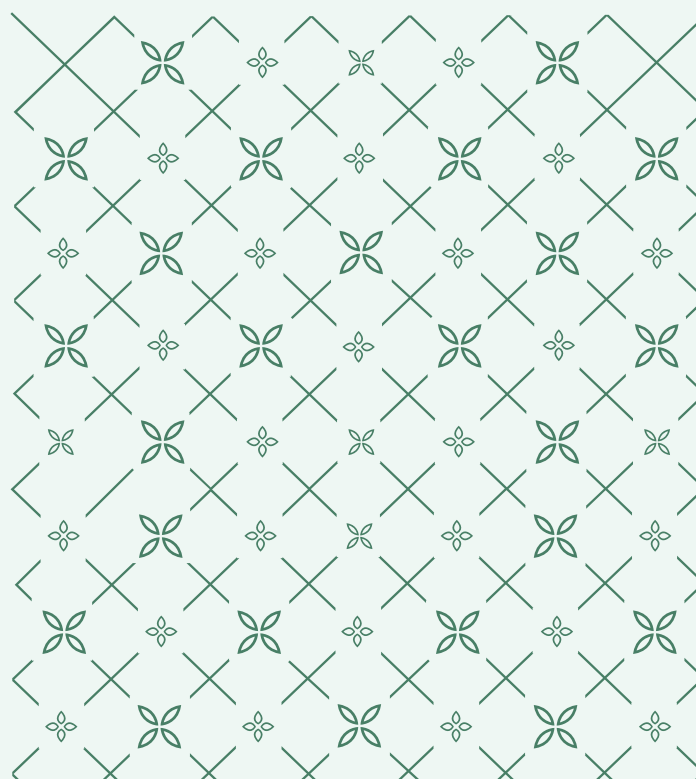
IMAGE USED FOR REPRESENTATION PURPOSE ONLY







TAPESTRY OF GRANDIOSE LUXURY



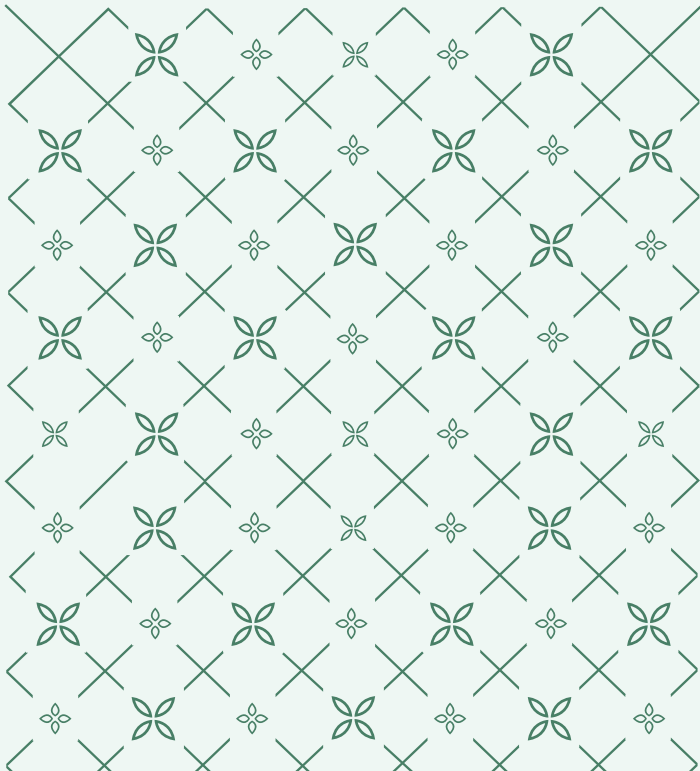
ARTISTIC RENDER





THE ORDINARY FINDS
ITS EXTRAORDINARY
HERE

ARTISTIC RENDER



An Affair with Recreational Convenience

Imagine starting your day with a refreshing dip in the sparkling pool, surrounded by serene environment. Challenge your limits in the state-of-the-art gym. Host unforgettable evenings with friends and family in the beautiful landscape. Experience a life with the seamless flow of convenience.



Multi purpose hall



Roof top Swimming Pool



Kids play area



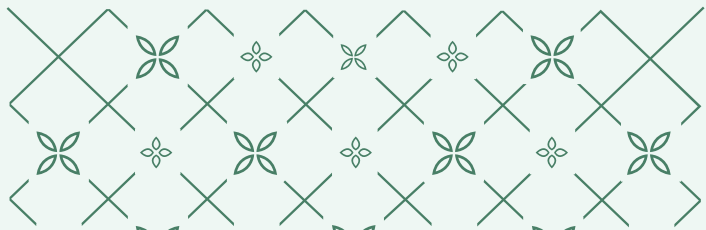
Party Arena



Gym



Indoor Badminton Court

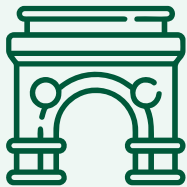


ARTISTIC RENDER





Amenities



GATED
COMMUNITY



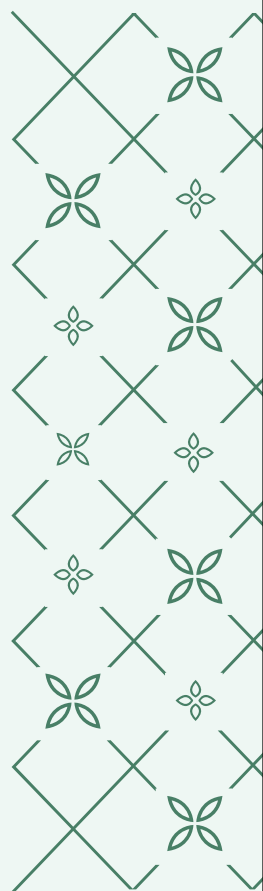
ON 24 METER
WIDE ROAD



CCTV
SURVEILLANCE



ROOF TOP
SWIMMING POOL





LOCATION MAP

SECTOR 33, SONIPAT

Aashirwad Multi
Speciality Bhagat Hospital



Haryana Multispeciality
Hospital



Pacific mall



ORCHIDS -
The Interna



Tau devi Lal Park



SECTOR-33



TURN RIGHT

FLYOVER

NATIONAL HIGHWAY 334B

←←← TOWARDS ROHTAK

THE PALMS Global School



ational School

Amrik Sukhdev

Mannat Haveli

LOCATION ADVANTAGES

IN CLOSE PROXIMITY TO UPCOMING
PLANNED METRO STATIONS

5 KM (Approx.)

CLOSE TO KMP

8 KM (Approx.)

IN CLOSE PROXIMITY TO THE UPCOMING
SPECIAL ECONOMIC ZONE (SEZ)

8 KM (Approx.)

CLOSE TO DELHI BORDER

15 KM (Approx.)

IN CLOSE PROXIMITY TO SCHOOLS, HOSPITALS
AND SHOPPING MALLS

5 KM (Approx.)



NATIONAL HIGHWAY 44

TOWARDS ELDECO AMOR

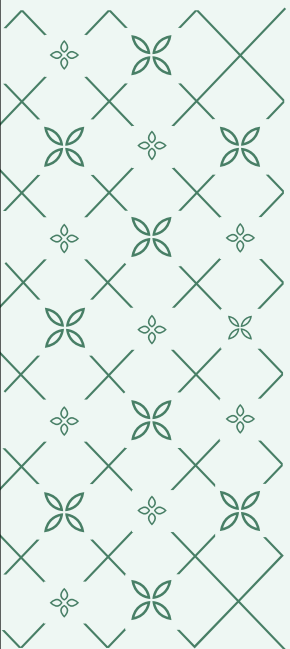
NATIONAL HIGHWAY 334B

TOWARDS DELHI >>>

Rai Sports Complex

Ansai Highway Plaza





A New Gateway to Delhi

Sanctuary of peace



Choose an Eldeco home.

Live Better.

ELDECO

200+ PROJECTS DELIVERED | 35+ YEARS OF EXPERTISE | 30000+ SATISFIED CUSTOMERS | 50000+ CSR BENEFICIARIES

To know more:

999 000 9458

Site Office: Sector - 33, Sonipat,
Haryana, 131001



Disclaimer: Eldeco Amor ('Project') is being developed by Eldeco Infracon Realtors Limited (CIN No. U70109DL2021PLC390926) having registered office at 201-212, Splendor Forum, IInd Floor, Jasola District Centre, New Delhi-110025, on a land admeasuring 16.31875 acres, situated at Sector 33, Sonipat Haryana, pursuant to license no 181 of 2023 dated 11.09.2023 granted by Director Town and County Planning, Haryana under DDJAY-2016, Haryana (as amended from time to time). *Basic price of Plot having 976.86 sq. ft. Extra charges applicable. Conditions Apply. 1 Acre = 4840 sq. yds. or 4046.86 sq. mtrs., 1 sq. mtr = 10.764 sq. ft.

All information, images and visuals or sketched including landscaping shown in this advertisement are only for representation purpose only. Nothing contained herein intends to constitute a legal offer and does not form part of any legally binding agreement and/or commitment of any nature. Recipients/ viewers are advised to exercise their discretion in replying on the information shown/ provided and are requested to verify all the details, including area, amenities, services, terms of sales and payments and other relevant terms independently and take appropriate advice prior to concluding any decision for buying any plot(s) in the Project.